



Supplies

Consumables

Toner Cartridges	
Black (up to 6,500 pages*)	CT200805
Cyan (up to 6,500 pages*)	CT200806
Magenta (up to 6,500 pages*)	CT200807
Yellow (up to 6,500 pages*)	CT200808

Additional Supplies

Drum Cartridge (up to 28,000 Black and White or 14,000 colour pages*)	CT350445
Maintenance kit 220V (up to 100,000 pages*)	CWAA0679

* Capacities are approximate, based on 5% coverage on an A4 size page.

Fuji Xerox Printers products require routine maintenance items to be replaced. Routine maintenance items are included whilst under standard Fuji Xerox Printers or optional extended warranty.

Life expectancy is based on A4 size pages. Mixed printing patterns and specialty media, may significantly reduce the unit life.

Machine is delivered with 3,000 pages of each toner cartridge

Accessories

550 sheet feeders (maximum of 3 can be added)	EL300588
Cabinet	EL300590
Castor (required when 2 or 3 extra 550 sheet feeders are added)	EL300591

DocuScan C4250 Scanner	DSC4250@-A
Network Expansion Card	EL300587
Internal Hard Disk	EL300586
512 MB Memory	EL300452

For more information or for your nearest authorised Fuji Xerox Printers reseller, visit our web site or call:

Australia 1300 793 769
New Zealand 0800 993 769

www.fxprinters.com

CONFIGURATIONS		DocuPrint C3055DX
Performance		
Print speed		35 ppm monochrome and 8 ppm colour A4 size
First page out		11 sec. monochrome and 22 sec. colour
Memory (std./max.)		256/640 MB RAM
Processor		350 MHz
PDL (Page Description Language)		PCL6/ PCL5e/ Adobe PS3 FX-PDF ESC/P
Maximum monthly print volume		65,000 pages
Print Quality		
Print resolution		600 dpi (9600 x 600 image enhancement)
Interface		
Standard		Ethernet 10/100Base-TX, Parallel IEEE1284, USB 2.0
Paper Handling		
Duplex printing		Standard
Media input capacity	Standard	Bypass tray: 155 sheets, Tray 1: 250 sheets
Maximum input capacity	Optional	2055 sheets
Media output capacity		550-sheet standard tray face down
Printer Features		
Colour printing access control		Yes (Standard Auditron)
Maximum printing access control		Yes (Standard Auditron)
Internal Hard Disk Drive		Yes (optional)
Device Management		Yes (standard - Embedded Web Server, Remote Printing, Email Alerts)
Warranty		
		One year on-site warranty

SPECIFICATIONS

Network/Software

Supported Protocol: LPD, Port9100, IPP[†], SNMP, HTTP, HTTPS[†], DHCP, BOOTP, RARP, AutoIP, WINS[†], FTP, SMB[†], DNS[†], SMTP, NetWare[†], Bonjour (mDNS)

Printer Management: CentreWare IS Embedded Web Server (EWS).

Font Capabilities: 81 standard European fonts

Printer Drivers: (PCL6 only) Windows 98/Me, Windows NT. 4.0 (SP4 or later), Windows 2000, Windows XP, Windows Server 2003
Languages: ESC/P, FX-PDF, PCL6, PCL5e PostScript3

Paper Handling

Bypass Tray: (60 to 80 gsm), Bond (81 to 105 gsm), Heavyweight (106 to 216 gsm), Coated (60 to 216 gsm), Transparency (for monochrome printing), Labels, Envelope, Recycled

Paper Tray: Plain (60 to 80 gsm), Bond (81 to 105 gsm), Heavyweight (106 to 216 gsm), Coated (60 to 216 gsm), Labels, Recycled
Duplex Printing: Plain (60 to 80 gsm), Bond (81 to 105 gsm), Heavyweight (106 to 163 gsm), Coated (60 to 105 gsm), Recycled

[†] Requires optional Network Expansion Card.
^{††} May require options or additional memory.

Media Sizes

Bypass Tray: A3, B4, A4, B5, A5, Ledger, Legal 14", Legal 13, Letter, Executive, Post Card(A6), Pre-paid postal card, C5, COM-10 DL, Monarch, Custom size: Minimum Size: 75 x 98mm, Maximum Size: 297 x 431.8mm

Paper Tray with Paper trays 250/550 Sheet Feeder: A3, B4, A4, B5, A5, Ledger, Legal 14", Letter, Custom size: Minimum Size: 210 x 148mm, Maximum Size: 297 x 431.8mm

Duplex Printing: A3, B4, A4, B5, A5, Ledger, Legal 14", Legal 13, Letter, Executive, Custom size: Minimum Size: 210 x 148mm, Maximum Size: 297 x 431.8mm

Special Features

Productivity Tools^{††}: Secure print, booklet printing, watermarks, banner printing, sample print, form overlay printing, IP address restriction, control panel restriction and ID printing.

Colour Controls

Selectable Print Quality Modes: Standard: 300 x 300 dpi; High Quality: 600 x 600 dpi (up to 9600 x 600 dpi)

Image Auto Correction: Off, Standard, Portrait, Landscape, Map

Image Types: Normal, Photo, Presentation, Web pages, POP

General Specifications

Dimensions: (W x D x H) 499.5mm x 534.0mm x 407.0mm
Weight: 41.6 kg (CRUs included)

Operating Environment:

Temperature: 10 to 32°C
Relative Humidity: 15 to 85% (no condensation) Humidity should be 47.5% or below at 32°C, and temperature should be 27.8°C or below at 85% humidity.

Noise level:

Standby mode: Silence (no fan)
Operating mode (LpAm) : 54dB
Electrical:
Consumption:
Standby mode 1: <27Wh (220V - 240V)
Standby mode 2: <5W (220V - 240V)
Operating mode: (Maximum with Options) <1010W (220V - 240V)

Customer Support

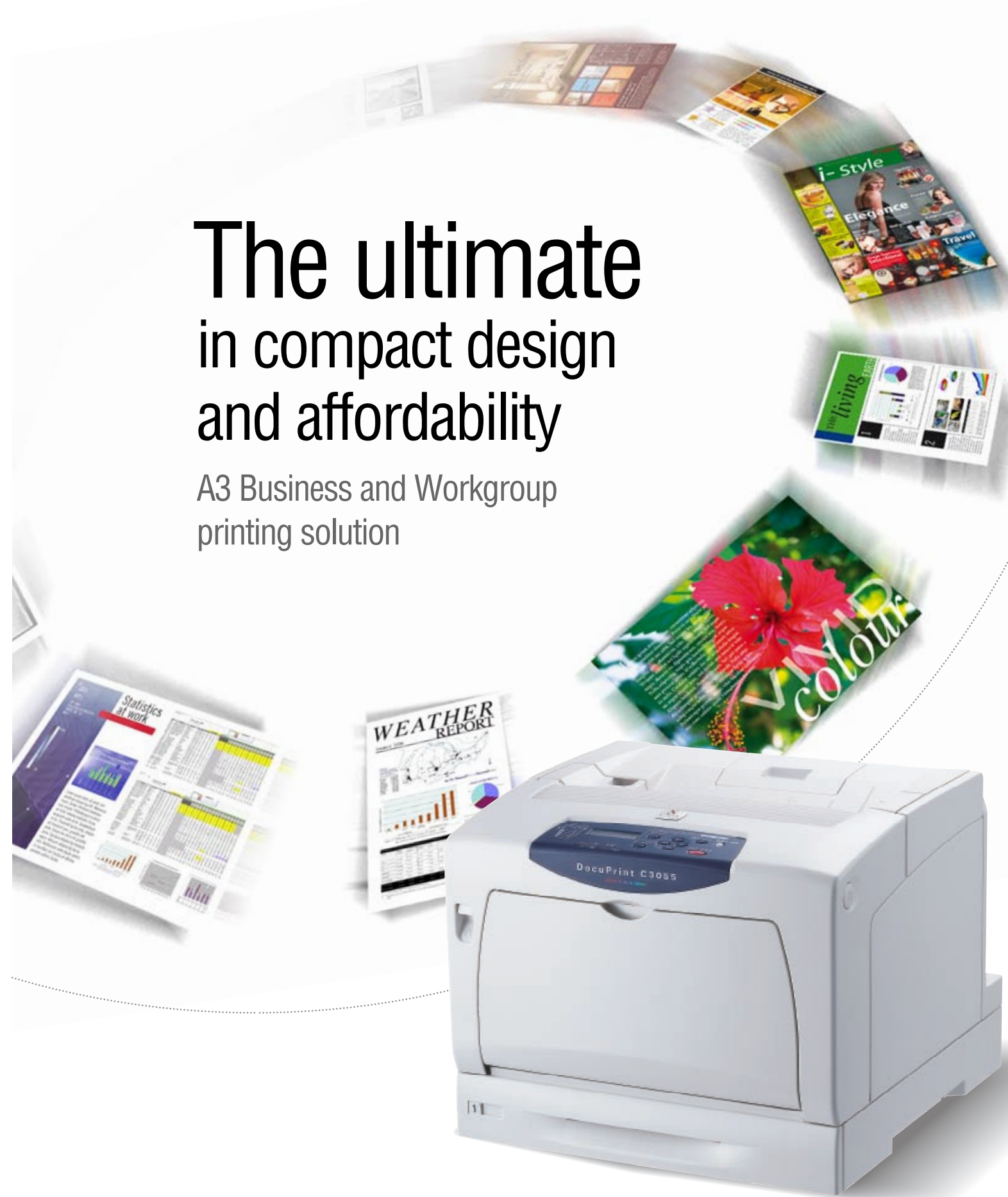
One year on-site warranty plus web and telephone technical support. Optional extended warranties available.

Warranty varies by location

For details please check with your local Fuji Xerox Printers office (AUS: 1800 811 177, NZ: 0800 449 177) or online at www.fxprinters.com

The ultimate in compact design and affordability

A3 Business and Workgroup printing solution



Fuji Xerox Printers



Small footprint Big capabilities

The DocuPrint C3055DX packs a lot of features in a very small package. It's the world's smallest A3 size mono printer replacement – that also prints in colour. Its versatility makes it perfect for small to medium workgroups that demand performance, flexibility and professional print quality.

Performance and versatility – in one compact design

Flexible and fast, the DocuPrint C3055DX delivers an impressive A4 black and white print speed of 35 ppm with a quick first print out time of just 11 seconds. Faster print speeds means less waiting time and more efficiency.

Fast mono, plus A3 size and colour prints

In addition to delivering impressive mono print speed, the DocuPrint C3055DX gives you the ability to print A3 size, for newsletters or big Excel worksheets, with the added bonus of delivering crisp full-colour prints.

Print everything in-house

Now everything you need can be printed on one single, small-size printer. From postcard size up to A3 size, 60 gsm up to 216 gsm, black and white to colour - you can print everything in-house, saving time and money.



NIE technology automatically corrects dark, improperly balanced images for optimum output quality.

Smallest footprint that will fit any office no matter how small.



Uncompromising quality

Advanced multi-level screen technology

Fuji Xerox unique multi-level screen technology automatically switches between the image processing methods for different objects such as photos, texts, and graphics in a document, producing optimal quality printing.

Unique NIE technology corrects improperly colour-balanced images

NIE (Natural Image Enhancement) technology automatically corrects the contrast and colour balance of poorly balanced images such as digital photos before printing.

Advanced colour correction by 3D-ACM

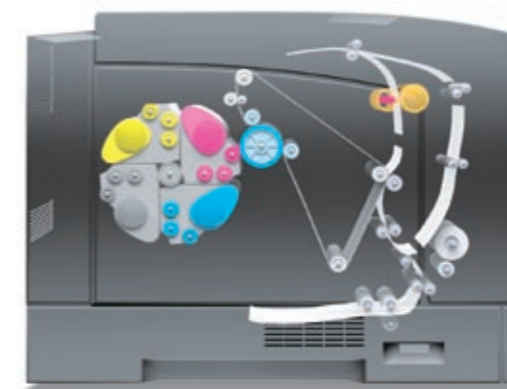
Fuji Xerox advanced colour correction technology 3D-ACM ensures that various types of documents (text, photos, presentations, and Web pages) reproduce with optimum colour.

Value-packed features right out-of-the-box

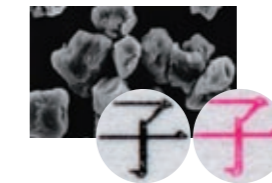
The DocuPrint C3055DX boasts a range of features that deliver even more value. With automatic duplex, you'll save paper and produce professional looking double-sided documents. With the network interface you can share the printer with your colleagues in the office and with PostScript 3 you can print from any environment – and it's all standard 'right out-of-the-box'.

Less waste

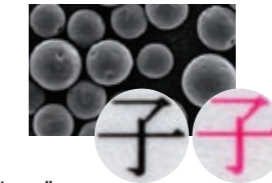
Proven Fuji Xerox "elasticity belt/lap transfer technology" and "EA toner" means perfect registration and transfer of toner to the paper. Not only does this deliver superb print quality, but it ensures that over 98% of toner is used for printing and that means less waste and less machine contamination from floating toner particles – it all adds up to greater reliability.



Conventional Toner particles



EA Toner particles



Fuji Xerox "elasticity belt/lap transfer technology" and "EA toner" means perfect registration and transfer of toner to the paper.

Take control

The DocuPrint C3055DX comes with powerful software that enables you to take control of your workflow.

Easier system administration

When the printer is installed in a TCP/IP environment, CentreWare Internet Services lets you check the printer status and configure settings using a web browser on a network computer – you can even check the printer status via e-mail.

Control usage and control costs

Auditron Printer Monitor can be used to control usage, for example setting limits on things like print volume and colour printing, which can help control and reduce your costs.

Expand your horizons

Upgrade to large input capacity of up to 2,055 sheets for less intervention and higher office productivity.



A3 multifunction ready – print, copy and scan with EASE!

The DocuPrint C3055DX can be easily upgraded to a powerful copier and scanner. Using the DocuScan C4250 scanner and optional stand, or additional 2 feeder with Castor kit you can scan or copy quality black and white or colour documents up to A3 size.

