



Wall mount included

Epson EB-575W / EB-580 / EB-585W

Ultra-short-throw projectors with connectivity for the BYOD classroom

Up to **3x**
Brighter Colours¹
with
Epson® Projectors



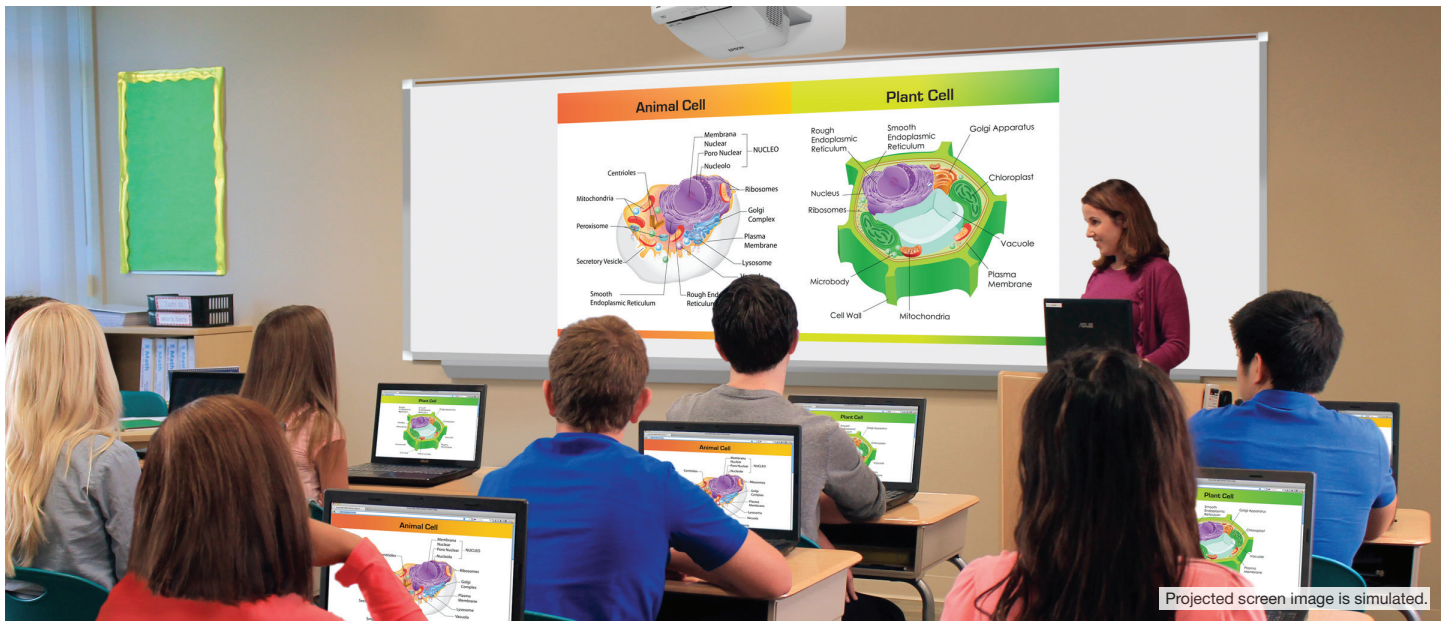
3 x Brighter Colours¹ and reliable performance – 3LCD, 3-Chip Technology. Look for both high colour brightness and high white brightness

One measurement of brightness is not enough – Look for both colour brightness and white brightness. The Epson EB-575W, 580 and 585W have:
Colour Brightness: 2,700 to 3300 lumens²
White Brightness: 2,700 to 3300 lumens²

Amazing image quality – available in native XGA and WXGA (widescreen) resolutions

The ideal wall-mount installation – get a 93" (XGA) or 100" (WXGA) image from as little as 32cm away; significantly reduces shadow interference and glare

Convenient collaboration for BYOD classrooms – wirelessly share and compare students' work from multiple devices, simultaneously, with Moderator software³



Ultra-short-throw projectors with connectivity for the BYOD classroom.

The perfect ultra-short-throw projectors for today's BYOD classroom, the EB-575W, 580 and 585W deliver a whole new level of collaborative learning. With brilliant image quality, plus advanced network connectivity and wireless performance, these projectors make it easy to share engaging lessons and control the projector remotely. Offering 3x Brighter Colours¹ than competitive models, Epson 3LCD projectors ensure bright, vivid lessons. Available in both XGA and larger-than-life WXGA resolutions, these projectors deliver dynamic images that are sure to captivate any classroom. They can project 93" (XGA) or 100" (WXGA) images from just 32cm away.

And, they feature Moderator software³, so you can easily share and compare students' work from multiple devices, simultaneously.

Projectors at a glance



	EB-575W	EB-580	EB-585W
Resolution:	WXGA (1280 x 800)	XGA (1024 x 768)	WXGA (1280 x 800)
Colour Brightness:	2700 lumens²	3200 lumens²	3300 lumens²
White Brightness:	2700 lumens²	3200 lumens²	3300 lumens²

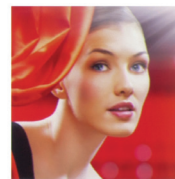
Amazing image quality



3x Brighter Colours with Epson¹

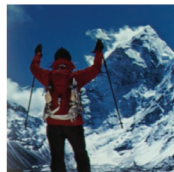
Brilliant image quality requires high colour brightness (colour light output), and Epson 3LCD projectors have 3x Brighter Colours than leading competitive projectors.¹

One brightness measurement (lumens) is not enough. A projector's specification needs to show both high colour brightness and high white brightness. If colour brightness is lower than white brightness, images may be dark, dull and lose detail. If not provided, be sure to ask for a projector's colour brightness specification.



EPSON

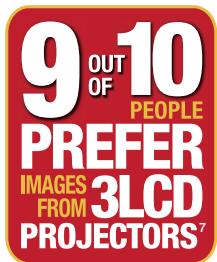
High colour brightness and high white brightness



COMPETITOR

Colour brightness significantly lower than white brightness

Actual photographs of projected images from an identical signal source. Price, resolution and white brightness are similar for both projectors (Epson 3LCD and 1-chip DLP competitor). Both projectors are set to their brightest mode.



3LCD – The #1 projection technology in the world

- All 3LCD projectors have both high colour brightness and high white brightness
- All 3LCD projectors have 3 chips
- 25% lower power consumption for lower energy costs⁸
- 20 years of road-tested reliability



Remarkable resolution for brilliant clarity and detail

Resolution defines the level of detail and depth you'll see in a projected image. It's measured as the number of pixels wide by the number of pixels high. The more pixels, the better the detail.

1.5x more resolution than SVGA



SVGA (800 x 600)

Meets basic projection needs



XGA (1024 x 768)

Ensures sharper detail

2x more resolution than SVGA



WXGA (1280 x 800)

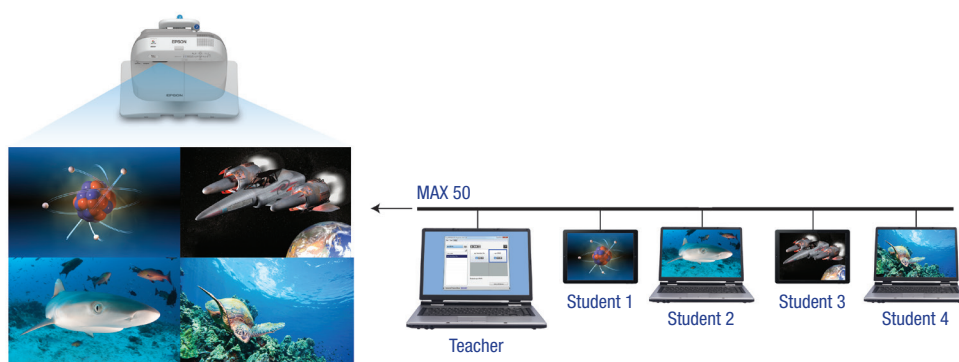
Offers high-definition and is ideal for widescreen (16:10) displays

Classroom collaboration

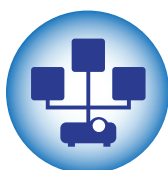
Teaching tools

Support BYOD classroom collaboration using Epson's Moderator feature³.

- Moderator (teacher) can display up to four different device screens simultaneously and control which device screens to display
- Connect to up to 50 Windows®, Mac®, iOS® or Android devices
- Encourage and control classroom collaboration; perfect for comparing students' work side-by-side



Advanced connectivity



EasyMP network projection



Free Epson iProjection App

Networking features that take teaching to the next level

- Manage up to 1024 Epson networked projectors using the included EasyMP® Monitor software or Crestron RoomView® — saves time and money
- Update projector firmware in-house via the network, a USB cable or a USB flashdrive — eliminates the need for external service center repairs; saves time and money
- Send updates or announcements remotely to up to 1024 Epson networked projectors using the Message Broadcasting⁹ plug-in for EasyMP Monitor
- Connect your projector to an access point to share it with the entire class, without running more cables

Share from your tablet or smartphone

Display from your iOS or Android mobile device with the free Epson iProjection App and any nearby Epson projector.⁴

- Control your presentation with just a touch of the screen
- Advance through PowerPoint® or Keynote® presentations
- Zoom in and out of PDF, Excel® and Word documents
- Project Web pages and view brilliant, high-quality images

¹ Compared to leading 1-chip DLP business and education projectors based on NPD data, July 2011 through June 2012. Colour brightness (colour light output) measured in accordance with IDMS 15.4. Colour brightness will vary depending on usage conditions.

² Colour brightness (colour light output) and white brightness (white light output) will vary depending on usage conditions. Colour light output measured in accordance with IDMS 15.4; white light output measured in accordance with ISO 21118.

³ Moderator feature is part of EasyMP Multi-PC Projection software.

⁴ Check your owner's manual to determine if a wireless LAN module must be purchased separately to enable wireless connection on your Epson projector. Epson projectors can be networked either through the Ethernet port on the projector (check model specifications for availability) or via a wireless connection. Not all Epson projectors are able to be networked. Availability varies depending on model.

⁵ Includes one Mobile High-Definition Link® (MHL) HDMI port.

⁶ EB-575W: ECO Mode is up to 10,000 hours, Normal Mode is up to 5000 hours. EB-580/585W: ECO Mode is up to 6000 hours, Normal Mode is up to 4000 hours. Lamp life will vary depending upon mode selected, environmental conditions and usage. Lamp brightness decreases over time.

⁷ 9 out of 10 people preferred images from leading 3LCD projectors over leading 1-chip DLP business and education projectors. Leading projectors selected according to NPD data as of July 2013. Based on independent U.S. research conducted by Radius Research (July 2013).

⁸ Data source: ProjectorCentral.com Jan. 2013. Average of 1128 shipping models for which the manufacturers provided lumens and total power data, all resolutions and brightness levels. Energy efficiency was measured as wattage per lumen. It was measured for both 3LCD and 1-chip projectors in each of five brightness segments. 3LCD projectors averaged less required electricity per lumen in each of the five segments.

⁹ Works only with Epson projectors that support presentation over the network capability.

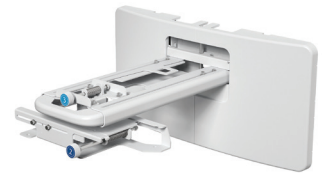
Easy to use



Simple Setup Suite from Epson

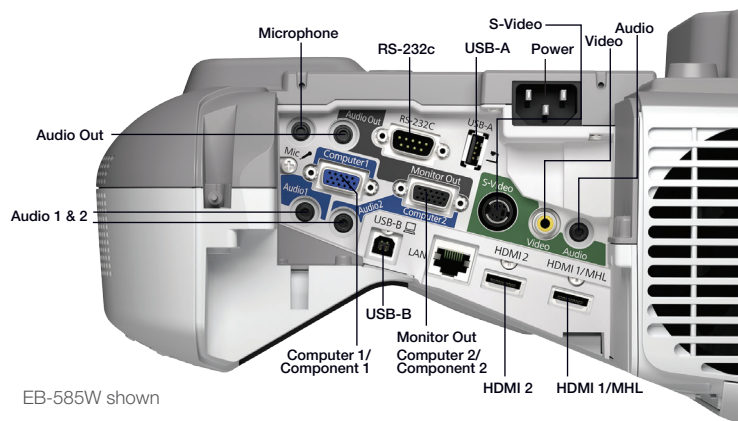
Epson projectors offer a suite of innovative features that ensure flexible placement and fast, easy setup.

- **2x HDMI** — supports multiple high-definition A/V devices. Compatible with the latest laptops, Blu-ray Disc® and media players
- **MHL** — the latest in connectivity⁵
 - Display content from your MHL-enabled smartphones, tablets and streaming devices
 - Use the projector remote to control MHL-enabled devices
 - Charge your MHL-enabled device when it's plugged into the projector
 - Offers instant access to movies, games and more
- **Quick Corner®** — this innovative feature allows you to move any of the four corners of an image independently, to adjust each corner for a perfectly rectangular picture
- **Advanced 3-in-1 USB Plug 'n Play instant setup** — instantly project audio and video from a PC or Mac via a USB connection
- **Quick, convenient control** — Instant Off® means no cool-down time required; it's ready to shut down when you are
- **Copy menu settings for multiple projector installations** — save on installation time; copy settings via a USB flash drive, USB cable or LAN
- **Flexible wall mount (included)** — easily install the projector with convenient adjustments, colour-coded dials and on-screen prompts. Wide cut-outs facilitate cable management



Easily conserve power

- **ECO Mode** — operates the projector in a lower brightness setting
- **Light Optimiser Mode** — adjusts the lamp brightness, based on the projected image
- **Auto Mode** — sensor automatically adjusts the lamp brightness, based on the room environment
- **Sleep Mode (A/V Mute)** — control your presentation; it's right at your fingertips
- **Direct Power On/Off** — power the projector on/off with the flip of a wall switch
- **Standby audio** — even when the projector is in Standby Mode, you can use the projector's internal speaker or pass audio out to an external speaker



Epson EB-575W / 580 / 585W



Product Specifications

Projection System	3LCD, 3-chip technology
Projection Method	Front/rear wall mount
Driving Method	Poly-silicon TFT Active Matrix
Pixel Number	
EB-580:	786,432 dots (1024 x 768) x 3
EB-575W/585W:	1,024,000 dots (1280 x 800) x 3
Colour Brightness²	Colour Light Output
EB-575W:	2700 lumens
EB-580:	3200 lumens
EB-585W:	3300 lumens
White Brightness²	White Light Output
EB-575W:	2700 lumens
EB-580:	3200 lumens
EB-585W:	3300 lumens
Aspect Ratio	
EB-580:	4:3
EB-575W/585W:	16:10
Native Resolution	
EB-580:	1024 x 768 (XGA)
EB-575W/585W:	1280 x 800 (WXGA)
Resize	640 x 580 (VGA), 800 x 600 (SVGA), 1024 x 768 (XGA/575W and 585W only), 1152 x 864 (SXGA), 1280 x 800 (WXGA and 580 only), 1280 x 960 (SXGA2), 1280 x 1024 (SXGA3), 1280 x 768 (WXGA 60-1/580 only), 1360 x 768 (WXGA 60-2), 1440 x 900 (WXGA+), 1400 x 1050 (SXGA+), 1600 x 900 (WXGA++)
Lamp Type	
EB-575W:	215 W UHE
EB-580/585W:	245 W UHE
Lamp Life⁶	
EB-575W:	Up to 10,000 hours (ECO Mode) Up to 5000 hours (Normal Mode)
EB-580/585W:	Up to 6000 hours (ECO Mode) Up to 4000 hours (Normal Mode)
Throw Ratio Range	
EB-580:	0.31 – 0.42, 575W/585W: 0.27 – 0.37
Size (Projected Distance)	
EB-580:	55.9" to 93.2" (0.348 to 0.597 m)
EB-575W/585W:	60" to 100" (0.348 to 0.597 m)
Keystone Correction Manual	Vertical ± 3 degrees; Horizontal ± 3 degrees
Mac Connectivity	Projector is Mac compatible via USB, DVI to HDMI or VGA adapter (not included), DP to HDMI or VGA
Contrast Ratio	Up to 10,000:1
Colour Reproduction	Up to 1.07 billion colours
PROJECTION LENS	
Type	No optical zoom/Manual focus
F-number	1.80
Focal Length	3.71 mm
Zoom Ratio	Digital zoom 1.0 – 1.35

INTERFACES

Wireless LAN Port	802.11 b/g/n (optional – module sold separately)
OTHER	
Display Performance	NTSC: 480 lines, PAL: 576 lines (Depends on observation of the multi-burst pattern)
Input Signal	NTSC/NTSC4.43/PAL/M-PAL/N-PAL/PAL60/ SECAM
Speaker	16 W (mono)
Operating Temperature	41° to 95°F (5° to 35°C)
Power Supply Voltage	100 – 240 V ± 10%, 50/60 Hz
Power Consumption	
EB-575W:	318 W (Normal Mode), 230 W (ECO Mode) 4.3 W Standby (Communication On) 0.44 W Standby (Communication Off)
EB-580/585W:	358 W (Normal Mode), 270 W (ECO Mode) 4.3 W Standby (Communication On) 0.44 W Standby (Communication Off)
Fan Noise	35 dB (Normal Mode), 28 dB (ECO Mode)
Security	Kensington®-style lock provision, padlock and security cable hole, password protect function

DIMENSIONS (W X D X H)

Excluding feet:	367 x 375 x 155 mm
Weight:	5.3kg

REMOTE CONTROL

Features	Source search, video, LAN, computer, USB, power, aspect, colour mode, volume, e-zoom, A/V Mute, freeze, menu, page up and down, help, auto, mouse functions, user, esc
Operating Distance	Front/rear: 6 m

WARRANTY

EB-580 / 575W / 585W:	3 years
Lamp Warranty:	1 year or 750 hours (whichever comes first)

WHAT'S IN THE BOX

Epson EB-575W, 580 or 585W projector, wall mount, 5m power cord, projector remote control, batteries, user manual CD, projector software CDs, Quick Setup Sheet, installation guide, template sheet

ORDERING INFORMATION

Product Name	
EB-575W	V11H603053
EB-580	V11H604053
EB-585W	V11H602053

Accessories

Genuine Epson lamp	
EB-575W ELPLP79:	V13H010L79
EB-580/585W ELPLP80:	V13H010L80
Replacement air filter ELPAF40:	V13H134A40
Connection and control box ELPCB02:	V12H614053
Active speakers ELPSPO2:	V12H467053
Wireless 802.11b/g/n LAN unit ELPAP07:	V12H418P13
Quick wireless connection USB key ELPAP09:	V12H005M09
DC-06 visualiser ELPDC06:	V12H321003
DC-12 visualiser ELPDC12:	V12H594053
DC-20 visualiser ELPDC20:	V12H500053

* Whichever comes first

Better Products for a Better Future

Epson is the registered trademark of Seiko Epson Corporation. All other names and company names used herein are for identification purpose only and may be the trademarks or registered trademarks of their respective owners. Epson disclaims any and all rights in those marks. All print samples shown herein are simulations. Specifications are subject to change without notice.

EPSON AUSTRALIA

3 Talavera Road
North Ryde NSW 2113
Tel: (02) 8899 3666
www.epson.com.au

EPSON NEW ZEALAND

Level 2, 7-9 Fanshawe Street
Auckland, 1010
Tel: (09) 366 6855
www.epson.co.nz

ABN 91 002 625 783

04/14

EPSON
EXCEED YOUR VISION