

July 2015

EB-S31, EB-X31, EB-X36, EB-W32, EB-U32

## Larger Than Life – Proven Performance



For further information please visit [www.epson.com.au](http://www.epson.com.au)



## KEY FEATURES:

- **3x Brighter Colours, and Reliable Performance** – 3LCD, 3-chip technology.
- **Amazing Colour Brightness** – Up to 3x brighter colours than 1-chip DLP projectors.
- **High Definition** – Native resolution up to WUXGA (1920 x 1200) supports Full HD for presentations, videos and more.
- **Wireless** – Connect directly to your computer, smartphone or tablet, without wires (Wireless LAN not included in all models but can be purchased separately).
- **Epson iProjection** – Wirelessly display and control from your iPhone®, iPad® or iPod Touch® and Android™ devices (wireless LAN not included in all models but can be purchased separately).
- **Versatile Connectivity** – Connect to virtually any device.
- **USB Plug 'n Play** – Use the included USB cable to instantly project content, transmit images, sound and mouse operation through one cable.
- **Low Cost of Ownership** – Long life, cost efficient lamps and a High Efficiency Filter extends the life of your projector and allows for hassle free maintenance.
- **New Home Screen** – A new simple home screen, puts all the most commonly used functions at your fingertips.
- **Built in Speaker** – Presenting is easy with a built in speaker.
- **Easy Setup** – Source detection means the projector automatically detects when you've plugged in a VGA cable and switches the source for you, combined with the image adjustment tools included, setup has never been easier.
- **2 Year Projector Warranty** – Enjoy peace of mind.

## 3LCD Technology

All Epson projectors are based on 3-chip LCD technology for amazing colour, incredible detail and solid reliability. 3LCD's 3-chip architecture dedicates an entire chip to process each primary colour – red, green and blue, continuously. Unlike single-chip technology that delivers colour sequentially, you get full-time colour. The result is vibrant, realistic images and video all delivered with 3LCD's true-to-life colour.



## Up to 3x Brighter Colours with Epson Projectors\*



Epson projectors use 3LCD Engines that have no colour wheel with a white segment and therefore don't force a tradeoff between white and colour brightness.

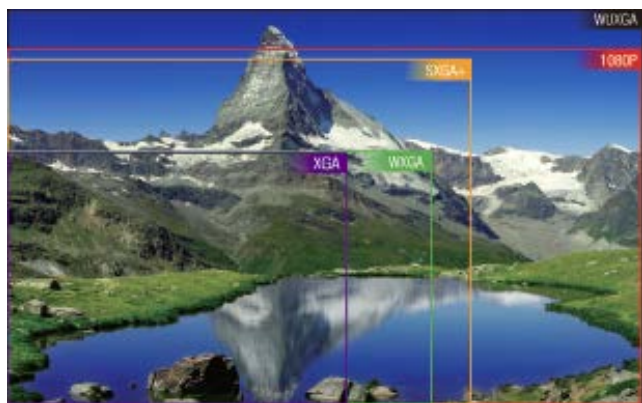
In fact, Epson projectors have up to 3x Brighter Colours than their leading competitive 1-chip DLP projectors\*. If you are looking for business and education projectors or 720p home entertainment projectors, know that choosing Epson projectors means up to 3x brighter colours. If you are looking for 1080p home entertainment projectors, you consistently get 2x and up to 3x Brighter Colours than competitor 1-chip DLP projectors\*.

All Epson projectors list both White Brightness and Colour Brightness specifications, and all have high Colour Brightness.

\* Compared to leading 1-chip DLP business and education projectors based on NPD data, July 2011 through June 2012. Colour brightness (colour light output) measured in accordance with IDMS 15.4. Colour brightness will vary depending on usage conditions.

## High Definition

Featuring resolution up to WUXGA (1920 x 1200), Epson's entry level projectors deliver high quality images and crisp, sharp text without any distortion. And, it makes it easy to display more content. You can also display HDTV content at its native resolution with quality that surpasses even that of 1080p devices.



WUXGA resolution is ideal for any application requiring Full Hi-Def, including BluRay content, graphic intensive programs, educational film slides, and any application requiring exceptional detail.

## Wireless Connection to Your Laptop and Mobile Device

Conveniently connect directly to your computer, smartphone or tablet, without wires. A range of wireless features are built-in to make it easy to connect wirelessly to a computer or laptop via a direct peer-to-peer connection. Also connect wirelessly to a network to presentation, or monitor/control your projector over the wireless network. (Wireless LAN not included in all models but can be purchased separately).

### Epson iProjection App

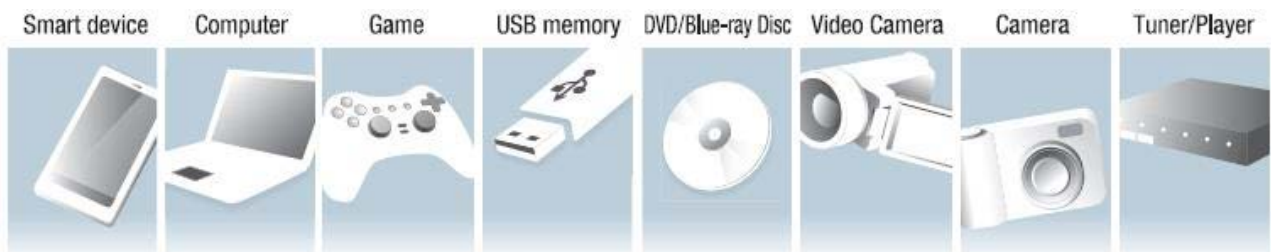


Display and control content from your iPhone, iPad or iPod touch and Android devices with the Epson iProjection App and any nearby wireless or networked Epson projector. This free application allows road warriors to travel light and present from their mobile devices. For teachers, it makes it easy to walk around the class and still be able to share engaging content — larger-than-life. The app is easy to use and navigate with intuitive menu options that make it simple to bring your content to the big screen.

You can now also use QR codes to quickly and easily connect and share your content through iProjection.

### Versatile Connectivity

Connect from virtually any device, making your presentations and entertainment simple and more accessible.



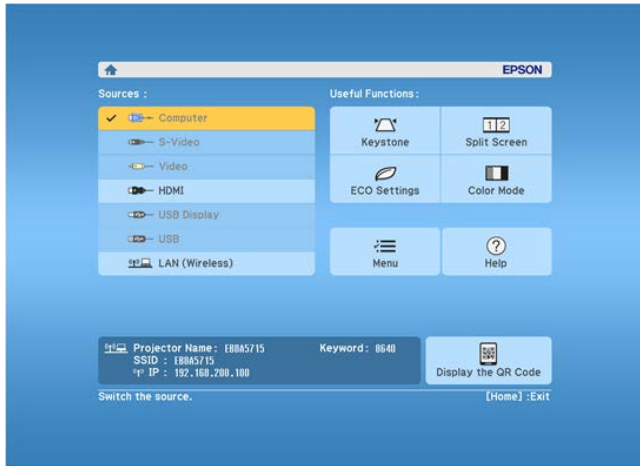
### USB Plug 'n Play

Epson's advanced 3 in 1 USB connectivity enables instant Plug 'n Play setup for Video, Audio and Control. Forget about complicated computer key sequences and non-intuitive controls. Instead, just plug in a standard USB cable and let your presentation impress the audience.

### Low Cost of Ownership

With an increased lamp life in ECO mode of 10,000 hours, it is now easier and more economical than ever to run our entry level projectors. The new entry level projectors also utilise a low lamp price and make use of a new High Efficiency Filter; extending the life of your projector and allowing for hassle free maintenance.

## New Home Screen



A new simple and intuitive home screen puts all the most commonly used functions at your fingertips, making it easier than ever to find the functions you need.

You can also customise the home screen, adding the functions you use most so they're always easy to find.

## Built in Speaker

A built in speaker makes presentations and videos hassle free.

## Split Screen

Split Screen allows users to display content from two inputs simultaneously, side by side, on a single screen with the option of three different layouts. This makes it possible to display video and presentation materials simultaneously, or run video on both screens.



## Projectors

PRODUCT CODE	DESCRIPTION	RRP (INC GST)
V11H719053	EB-S31	\$599
V11H720053	EB-X31	\$649
V11H723053	EB-X36	\$849
V11H721053	EB-W32	\$799
V11H722053	EB-U32	\$999

## Accessories

PRODUCT CODE	DESCRIPTION	RRP (INC GST)
V12H731P01	ELPAP10 Wireless LAN Adapter <b>NEW</b>	\$149
V13H010L88	Replacement Lamp	\$99
V13H134A32	Replacement Filter	\$22
V12H003B23	Ceiling Mount	\$219
V12H003P13	Extension Pole 668-918mm	\$89
V12H003P14	Extension Pole 918-1,168mm	\$129

## Extended Warranties

PRODUCT CODE	DESCRIPTION	RRP (INC GST)
3YWEBS31	Additional 1 year warranty for EB-S31	\$139
3YWEBX31	Additional 1 year warranty for EB-X31	\$139
3YWEBX36	Additional 1 year warranty for EB-X36	\$139
3YWEBW32	Additional 1 year warranty for EB-W32	\$139
3YWEBU32	Additional 1 year warranty for EB-U32	\$139

For further information please visit [www.epson.com.au](http://www.epson.com.au)



Model	EB-S31	EB-X31	EB-X36	EB-W32	EB-U32
<b>Case Colour</b>	White	White	White	White	White
<b>White Light Output</b>	3,300 lms	3,300 lms	3,600 lms	3,300 lms	3,200 lms
<b>Colour Light Output</b>	3,300 lms	3,300 lms	3,600 lms	3,300 lms	3,200 lms
<b>Display Technology</b>	3LCD	3LCD	3LCD	3LCD	3LCD
<b>Native Resolution</b>	SVGA	XGA	XGA	WXGA	WUXGA
<b>Aspect Ratio</b>	4:3	4:3	4:3	16:10	16:10
<b>Contrast Ratio</b>	15,000:1	15,000:1	15,000:1	15,000:1	15,000:1
<b>Keystone</b>	V±30° H±30°	V±30° H±30°	V±30° H±30°	V±30° H±30°	V±30° H±30°
<b>Zoom Ratio</b>	1 - 1.35 (Digital)	1 - 1.2 (Optical)	1 - 1.2 (Optical)	1 - 1.2 (Optical)	1 - 1.2 (Optical)
<b>HDMI</b>	1	1	1	1 (MHL)	2 (1 x MHL)
<b>Wireless LAN</b>	Optional	Optional	Optional	✓	✓
<b>Lamp Hours (Normal/Eco)</b>	5,000/10,000 hrs	5,000/10,000 hrs	5,000/10,000 hrs	5,000/10,000 hrs	5,000/10,000 hrs
<b>Dimensions (W x H x D)</b>	297 x 82 x 234 mm	297 x 82 x 234 mm	297 x 82 x 234 mm	297 x 82 x 234 mm	297 x 82 x 244 mm
<b>Weight (Kg)</b>	2.4	2.4	2.4	2.4	2.6
<b>Warranty (Projector)</b>	2 Years	2 Years	2 Years	2 Years	2 Years
<b>Warranty (Lamp)</b>	12 months or 750 hours*	12 months or 750 hours*	12 months or 750 hours*	12 months or 750 hours*	12 months or 750 hours*

\*Whichever comes first

For further information please visit [www.epson.com.au](http://www.epson.com.au)



## USB and Network Projection Supported Features

Model Name		EB-S31	EB-X31	EB-X36	EB-W32	EB-U32
<b>Multi-PC Projection (Win/Mac)</b>		YES	YES	YES	YES	YES
<b>USB Display (Win/Mac)</b>	<b>Image</b>	YES	YES	YES	YES	YES
	<b>Audio</b>	YES	YES	YES	YES	YES
<b>PC Free/Slide Show</b>	<b>Still Image</b>	YES	YES	YES	YES	YES
	<b>Movie</b>	YES	YES	YES	YES	YES
	<b>PDF</b>					
<b>Document Camera Via USB</b>		YES	YES	YES	YES	YES
<b>LAN</b>	<b>Wired</b>					
	<b>Wireless 802.11 (bgn)</b>	YES	YES	YES	YES	YES
	<b>Wireless high</b>					
	<b>Soft Access</b>	YES	YES	YES	YES	YES
<b>Quick Wireless</b>	<b>Image</b>	YES	YES	YES	YES	YES
	<b>Audio</b>	YES	YES	YES	YES	YES
<b>Network Projection (Win/Mac)</b>	<b>Image</b>	YES	YES	YES	YES	YES
	<b>Audio</b>	YES	YES	YES	YES	YES
	<b>Movie</b>					
<b>iProjection</b>	<b>iOS</b>	YES	YES	YES	YES	YES
	<b>Android</b>	YES	YES	YES	YES	YES
<b>EasyMP Monitor</b>		YES	YES	YES	YES	YES
<b>Message Broadcasting</b>		YES	YES	YES	YES	YES
<b>Service Menu View</b>		YES	YES	YES	YES	YES
<b>Web Remote</b>		YES	YES	YES	YES	YES
<b>Crestron RoomView</b>						
<b>EasyMP Network Updater</b>						

For further information please visit [www.epson.com.au](http://www.epson.com.au)





## Connectivity Panel

### EB-S31/X31/X36/W32



### EB-U32

