

THE DOCUMENT COMPANY  
**FUJI XEROX**



**Phaser 8560/8560MFP**  
Colour Solid Ink Printer & MFP

# Affordable power

for the busiest office



Fuji Xerox Printers

# A colourful choice...

Phaser® 8560

Phaser® 8560MFP



*Solid ink is earth-friendly.  
It generates 1/40th the waste  
of a typical colour laser device.*

Fuji Xerox offers a choice of value-packed office devices that deliver the utmost in productivity: The **Phaser 8560** printer gives busy workgroups a fast, affordable, easy-to-use colour printer that can expand from a desktop model to a four-tray, floor-standing powerhouse; the **Phaser 8560MFP** multifunction printer adds top-of-the-line copying, scanning and faxing for all your office document needs.

## Outstanding colour

**The Phaser 8560 printer and the Phaser 8560MFP multifunction printer give you precise details and rich, vibrant colours.**

- Count on superior output on everything from cover stock to recycled paper. Confidently handle colour projects in-house and reduce costs and increase efficiency.
- True Adobe PostScript 3 and automatic colour-enhancement tools ensure that colour-intensive documents print reliably and accurately.
- Produce fast, versatile prints for everyday jobs. When you really want to impress, switch to 2400 FinePoint print resolution mode.
- Nothing else on the market offers more consistent, vivid colour. The last page of a large print job looks as good as the first.



*Go ahead, get creative.  
Print on business card stock,  
postcards, labels,  
transparencies and more. You  
can expect the same brilliant  
output no matter what the  
media.*

# Phaser 8560/8560MFP

Colour Solid Ink Printer & MFP



### What do both products have in common?

Easier to use than colour lasers or inkjets, solid ink delivers high performance, a very low cost of ownership and outstanding print quality.

## Colourful, versatile and easy to use

### PRINT

#### Phaser 8560

##### High-performance printing

- Superfast 30 ppm printing for both colour and black-and-white
- Outstanding print quality and flexible media handling
- Feature packed and cost effective

### COLOUR

**The impact of colour**  
Colour attracts, clarifies and sells. It is one of the most effective business tools available.

### EASE OF USE

**Easy to install, use and manage**  
Boost productivity with devices that make office life easier.

#### Phaser 8560MFP

##### Sophisticated functionality

- Print, copy, scan and fax together in one device
- Multitasking performance
- Advanced fax capabilities

### PRINT

### COPY

### SCAN

### FAX

# print

## Phaser 8560



### A colour printer that meets the challenge

**The Phaser 8560 printer delivers fast, attention-grabbing results.**

- Pick up the pace with a first-page-out print time as fast as 5 seconds. Both black-and-white and colour print at up to 30 ppm.
- A 600 MHz processor and 256 MB of memory (upgradeable to 1 GB) provide the muscle you need for the most intense projects.
- Put off reloading paper, or swapping one size for another, with a combined paper-tray capacity of 625 sheets — a huge stack of paper for a device that sits on a desktop. Add third and fourth trays to increase capacity to 1,675 sheets.
- Handy productivity printing tools are standard, not expensive add-ons: job accounting, booklet printing, image smoothing and many more.
- Automatic two-sided printing saves time and reduces paper costs.

# print copy scan fax

## Phaser 8560MFP

### Multiple functions, no waiting

**The Phaser 8560MFP will tackle your workload with an array of time-saving tools:**

- Access walk-up copying, scanning, or faxing functions when you need them, even while other jobs are printing. Spend your valuable time working, not waiting for your turn.
- See the first page of your copy job in as little as 15 seconds and the first page of your print job in as little as 6 seconds. Print black-and-white and colour at up to 30 ppm.
- Gather all those loose paper documents and scan them straight to your desktop, or to a public or private folder. Organise, edit, and distribute files with powerful onboard scanning tools.
- LAN Fax lets you send faxes directly from your PC.
- An array of productivity tools for all functions is standard.



### Superior design and ease of use

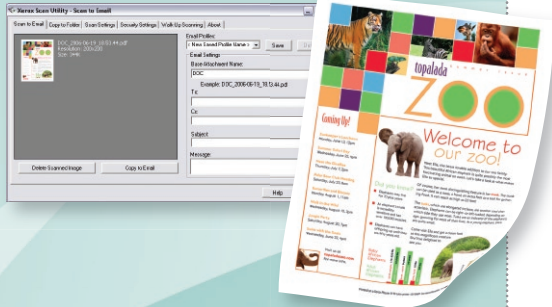
*Large paper trays let you print more without interruption.*

- 1 100-sheet Tray 1 for a wide range of custom media and sizes
- 2 Generous 525-sheet Tray 2
- 3 Add one or two 525-sheet trays
- 4 for a total capacity of 1,675 sheets



# Phaser 8560/8560MFP

Colour Solid Ink Printer & MFP



## An ace up your sleeve: Scanning tools

Use the power of scanning and your Phaser 8560MFP to efficiently organise, edit and distribute information.

- Scan documents straight to your desktop. Edit them now or store them for access later.
- Scan documents to a public folder. This gets them off your desktop and makes them accessible to anyone.
- Scan documents to password-protected private folders. This allows central storage but restricted access.

## Scan to PC Desktop software

Plus, we include a valuable scanning software bundle with the 8560MFP/X configuration:

**Convert:** Quickly convert paper and PDF documents into editable and searchable digital documents supporting Microsoft Office applications, with accurate page layout and format.

**Organise and share:** Quickly and easily scan, annotate, or archive documents in PDF file format. The PDF files can be viewed, accessed and arranged via large, clear thumbnails on the desktop and shared with a simple drag-and-drop.

## No-fuss productivity

A simple, cartridge-free design and a host of helpful features make these devices easy to set up, operate and share.



- Streamlined, automated driver installation gets your device up and running in minutes.
- Replenishing ink is as easy as reloading a stapler. There's no mess to clean up and no bulky boxes to store.
- PrintingScout technology monitors your print projects. If a potential issue arises, a handy pop-up alert suggests a remedy.
- Manage, configure and monitor print jobs directly from your computer thanks to the CentreWare IS Embedded Web Server.
- Built-in security tools (standard on 8560DX and all 8560MFP configurations) keep your data safe. Secure Print holds hard-copy output until a PIN is entered, and Hard Drive Overwrite "shreds" data after every job or on request.



*A monthly duty cycle of 85,000 pages (170 reams of paper!) guarantees long-lasting reliability and quality for your busy workgroup.*



## Supplies

### Consumables

Description	Order Number
Genuine Xerox Solid Ink Cyan (3 sticks) 3,400 pages*	108R00723
Genuine Xerox Solid Ink Magenta (3 sticks) 3,400 pages*	108R00724
Genuine Xerox Solid Ink Yellow (3 sticks) 3,400 pages*	108R00725
Genuine Xerox Solid Ink Black (3 sticks) 3,400 pages*	108R00726
Genuine Xerox Solid Ink Black (6 sticks) 6,800 pages*	108R00727

### Consumables

Standard-Capacity Maintenance Kit 10,000 pages*	108R00675
Extended-Capacity Maintenance Kit 30,000 pages*	108R00676

### Options

Productivity Kit (8560)	097S03812
256 MB Memory	097S03381
512 MB Memory	097S03382
525-sheet feeder (8560)	097S03174
525-sheet feeder (8560MFP)	097S03319
System Cart	097S03318
Scan to PC Desktop	
-Professional (std on 8560MFP/X)	097S03735
-SE	097S03739

\* Capacities are approximate, based on 5% coverage on an A4 size page.  
# Life expectancy is based on A4 size pages. Mixed printing patterns and specialty media, may significantly reduce the unit life. Machine supplied with 2 solid ink sticks of each colour.

## Configurations

	8560DN	8560DT	8560MFP/D	8560MFP/X
<b>Speed</b>	Up to 30 ppm colour / 30 ppm black-and-white			
<b>Duty Cycle</b>	85,000 pages/images per month			
<b>Paper Handling</b>	100 sheets; Custom sizes: 76 x 127 mm to 216 x 356 mm			
<b>Tray 1:</b> Paper input	525 sheets; Selectable sizes: 140 x 216 mm to 216 x 356 mm			
<b>Tray 2:</b>				
<b>Document handler</b>	NA	Duplex Automatic Document Feeder: 50 sheets		
<b>Tray 3:</b> 525 sheets	Optional	Optional	Standard	
<b>Tray 4:</b> 525 sheets	Optional	Optional	Standard	
<b>Paper output</b>	300 sheets			
<b>Two-sided output</b>	Standard			
<b>Copy</b>				
<b>First-page-out time</b>	NA	As fast as 15 seconds colour / 15 seconds black-and-white		
<b>Resolution (max)</b>	NA	600 x 600 dpi		
<b>Copy features</b>	NA	Book copying, Booklet creation, Collation, Covers, Image Center, Image shift, N-up, Reduce / Enlarge, Repeat image, Colour Password Protection		
<b>Print</b>				
<b>First-page-out time</b>	As fast as 5 seconds colour		As fast as 6 seconds colour	
<b>Resolution (max)</b>	Up to 2400 FinePoint			
<b>Memory (std / max)</b>	256 MB / 1 GB	512 MB / 1 GB	1 GB / 1 GB	
<b>Processor / PDL</b>	600 MHz processor / True Adobe PostScript 3, PCL 5c emulation			
<b>Connectivity</b>	10/100Base-TX Ethernet, USB 2.0			
<b>Print features</b>	Custom-size pages, Xerox Installer, Intelligent Ready, Booklet printing, Smart Trays, Remote Printing, Job Accounting, Printer Neighborhood, Run Black			
<b>Productivity kit</b>	Optional	Hard drive: Personal/Personal Saved/Secure/Proof/Saved Print, Print With, Extended font/form storage, Collation, Hard Drive Overwrite		
<b>Scan</b>				
<b>Resolution (max)</b>	NA	600 x 600 dpi		
<b>Scan destinations</b>	NA	Scan to PC / Mac, Scan to TWAIN application, Scan to email via Utility, Scan to desktop, Scan to Public / Private Folders		
<b>Scan to PC Desktop</b>	NA	Optional	Standard	
<b>Fax</b>				
<b>Fax features</b>	NA	33.6 kbps Super Group 3, 200 individual / 100 group Speed dials, fax to multiple addresses, Fax security		
<b>Warranty</b>	One-year on-site warranty			

## Specifications

### Device Management

Xerox® CentreWare® Printer Management for Microsoft, Novell and UNIX, Xerox CentreWare® IS Embedded Web Server, CentreWare Web, Xerox NDPS Gateway, Usage Analysis Tool, Configuration card, PrintingScout™, MailLinX email alerts, PhaserSMART®

### Print Drivers

Windows® 2000/XP/2003 Server, Vista, Mac OS® 9.x/X version 10.2 and higher, Novell NetWare® 5.x/6.5 (NDPS only), UNIX/Linux (see web), Xerox Walk-Up® Printer Drivers

### Security

802.1x protocol\* (EAP-MD5, EAP-TLS, EAP-PEAP-MSCHAPv2)

### Media Handling

**Tray 1:** 60 – 220 gsm; 89 x 127 mm to 216 x 356 mm  
**Trays 2 – 4:** 60 – 120 gsm; 140 x 216 mm to 216 x 356 mm

**Duplex Automatic Document Feeder:** 60 – 120 gsm

**Media types:** transparencies, envelopes, labels, glossy paper, custom-size paper

\*Available for 8560MFP in Q4 2007

### Operating Environment

**Temperature:** Non-operating: -30° to 60° C; Operating: 10° to 32° C **Relative Humidity:** Non-operating: 10% to 95%; Operating: 10% to 80% **Sound power levels:** Operating: 54 dBA, Standby: 33 dBA

### Electrical

**Power:** 110 – 240 V, 50 – 60 Hz  
**Power consumption:** Average: 230 W / Max: 1500 W;  
ENERGY STAR® qualified (S configuration)

### Dimensions (WxDxH)

**Phaser 8560:** 406 x 533.4 x 368 mm;  
**Weight:** 28 kg.  
**Additional feeder:** 135 mm;  
**Weight:** 7.3 kg.

**Phaser 8560MFP:** 532 x 665 x 620 mm;  
**Weight:** 43 kg.

**Additional feeder:** 135 mm;

**Weight:** 7.3 kg.

**Optional cart:** 500 x 670 x 360 mm

### Customer Support

One year on-site warranty plus web and telephone technical support. Optional extended warranties available.

### Warranty varies by location

For details please check with your local Fuji Xerox Printers office (AUS: 1800 811 177, NZ: 0800 449 177) or online at [www.fxprinters.com](http://www.fxprinters.com)

For more information or for your nearest authorised Fuji Xerox Printers reseller, visit our web site or call:

Australia 1300 793 769

New Zealand 0800 993 769

[www.fxprinters.com](http://www.fxprinters.com)



# Fuji Xerox Printers