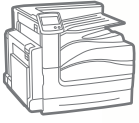


Phaser®
7800
A3
Colour
Printer



Xerox® Phaser® 7800
Colour Printer
The graphic arts
gold standard

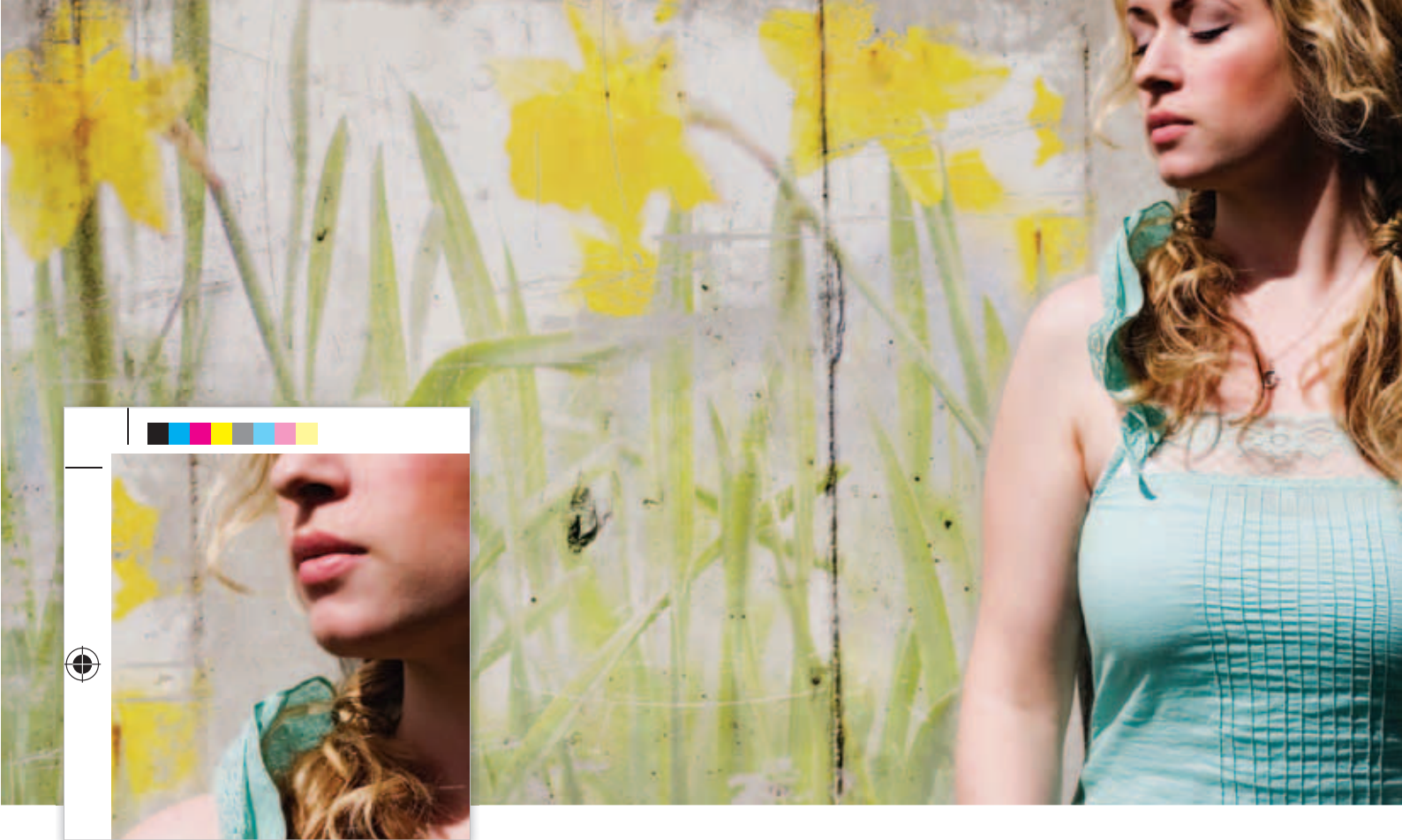


Phaser® 7800 Colour Printer

Unmatched colour printing. Industry-leading media flexibility.

Professional colour management technologies. These are the benchmarks of the Phaser 7800 – the only A3 paper size colour printer in its class that delivers the full complement of advanced capabilities today's most graphic-intensive environments require. Now any business that produces large volumes of high-resolution output, such as advertising agencies, graphic design shops, marketing communications firms, photography studios, medical imaging specialists and countless others, can keep more of their business-critical print jobs in-house thanks to the Phaser 7800 colour printer's unbeatable state-of-the-art technologies.





Print shop-quality colour, without the print shop

If your work demands the best-possible colour print quality, the Phaser 7800 colour printer is the obvious choice. With the winning combination of consistently superior image quality and professional-level colour-matching technologies, no other A3 paper size colour printer gives creative professionals the freedom to produce more customer-facing collaterals in-house.

- **True 1200 x 2400 dpi.** The Phaser 7800 colour printer delivers a high print resolution that consistently produces realistic images, photos and graphics, plus sharp text and fine-line detail.
- **The colours you expect, with reliable accuracy.** PANTONE® calibrated solid-colour simulations and Xerox colour correction technology deliver results that always match your expectations, while true Adobe® PostScript® 3™ ensures accuracy you can count on.
- **Seeing is believing.** Impress your clients and potential customers with output that, until now, could only be achieved by outsourcing your work to a professional print shop. The Phaser 7800 produces glossy, vivid colours; rich, deep blacks; and the smoothest colour transitions – no streaking, banding or striping.
- **Easy viewing.** Stunning colour quality means very little if your audience can't easily understand your messaging. Advanced trapping technology ensures clean edges and prevents gaps between adjacent colours. Plus, black text on coloured backgrounds and coloured text on black backgrounds always prints sharp and clear.
- **Advanced print head technology.** The Phaser 7800 colour printer features the Xerox Hi-Q LED print head, which provides better dot-to-dot intensity and timing control, and produces precise colour registration.



Environmental advantages

The Phaser 7800 colour printer includes an impressive lineup of standard features that help your office environment reduce its impact on the natural environment.

- **EA Toner.** Our EA Toner with low-melt technology achieves minimum fusing temperature at 20 degrees C less than conventional toner for even more energy savings.
- **Reduced paper consumption.** Save paper and money when you print multipage documents with automatic two-sided output.
- **Hi-Q LED Print engine.** Proven Hi-Q LED print engine technology consumes minimal energy and space, and operates quietly.
- **Induction heating fuser.** The heat-efficient IH fuser consumes substantially less power in standby mode than conventional fusers and achieves a start-up time of less than 15 seconds.



The best colour printing, and beyond

Powerful, industry-leading software solutions for colour matching, proofing and variable-data printing allow you to bring additional professional-level graphic-arts and marketing capabilities in-house.

PhaserMatch® 5.0 with PhaserMeter™ Colour Measurement Device powered by X-Rite. For graphic artists and colour professionals, colour matching is a critical task. Standard with the Phaser 7800GX configuration (optional with DN and DX configurations), PhaserMatch 5.0 colour management and calibration software adds another level of colour control and helps maintain colour accuracy. It brings stability to the process – delivering consistent, predictable and reproducible colour matching. Plus, it comes with the PhaserMeter all-in-one Colour Measurement Device, which captures colours and helps calibrate your monitors and Phaser 7800 printer.

PhaserMatch 5.0 benefits include:

- Colour calibration for accurate, consistent results
- Control over repeatable colour – saving time and money
- Greater colour accuracy for design visuals and prepress proofs
- Fewer iterations and assurance that digital proofs meet press colour expectations



The peak of productivity

Engineered for fast-paced environments with the most demanding expectations, the Phaser 7800 colour printer delivers clearly superior colour quality without sacrificing exceptional speed or reliability. Now any business or organisation that depends on colour – whether selling their products, winning new business or sharing creative concepts – can produce the most impressive, customer-ready collaterals as fast as they need them.

- **Fast printing.** The Phaser 7800 helps you beat your deadlines, delivering both black and white and colour output at a speed of up to 45 ppm.
- **A true powerhouse.** With a 1.33 GHz processor, 2 GB of memory and a standard 160 GB hard drive, the Phaser 7800 is designed to handle a steady flow of high-resolution print jobs loaded with colourful images and graphics.
- **Standard duplexing.** Automatic two-sided printing comes standard, providing more flexibility and helping reduce paper consumption. Plus, the Phaser 7800 printer's duplex speed is just as fast as single-side printing, so there's no sacrificing efficiency for conservation. And with the optional Extra Heavy Duty Media Kit you can print two-sided output on standard and custom-size media in weights up to 300 gsm. No other printer in its class handles such a wide variety of heavy stock*.
- **Long-term durability.** With a duty cycle of up to 225,000 pages per month, we built the Phaser 7800 colour printer to withstand constant use and perform at its best for years to come.
- **Total peace of mind.** In the unlikely event that a problem does occur, your Phaser 7800 is covered by a one-year onsite warranty.



Emphasis on easy

Designed to handle a wide variety of complex colour print jobs, there's nothing complex about the Phaser 7800 colour printer's usability. With superior printer management capabilities and innovative, helpful technologies, even those with no experience using advanced colour printers will quickly become comfortable with the wealth of useful features offered by the Phaser 7800.

- **Advanced touch screen interface.** The Phaser 7800 features a state-of-the-art 109 mm, colour touch-screen interface. Its big, bright icons and intuitive menus make walk-up operation faster and easier than ever.
- **Help where you need it.** The Phaser 7800 features embedded help videos for quick, easy, step-by-step troubleshooting assistance right on the colour touch screen.
- **Effortless printer management.** CentreWare® Internet Services embedded web server helps you save valuable time by simplifying configuration cloning and automatic installation of additional Phaser 7800 colour printers. You can also view job status and troubleshoot right from your web browser.
- **Fewer interventions.** Long-life, user-replaceable items, such as the imaging unit and fuser, are easy to access and replace. Plus, they're engineered for maximum longevity so you'll stay more productive, longer.
- **Easy, front access.** The Phaser 7800 was designed for total convenience. There's no need to rotate or move the printer to perform routine maintenance like changing toner and adding paper.
- **Bidirectional communication.** The Phaser 7800 sends print-job updates, along with toner and paper supply levels, to your desktop or even over the web. Pop-up alerts immediately notify you of any print problems – and how to fix them.

More finishing options, greater design flexibility

The Phaser 7800 colour printer gives graphic arts professionals an impressive range of business-ready finishing options to choose from. Depending on your needs and budget, you can go with the all-in-one Professional Finisher and get stacking, stapling, hole punching, booklet making and v-folding; or start with the Office Finisher LX and get stacking and stapling with the flexibility to add separate hole punching, creasing and stapling capabilities as your workload dictates.



Oversize Output for A3 bleed



Booklet



V-Fold



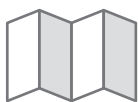
2/4-hole punch



Multiposition stapling

Xerox Media: Unique media applications for digital colour printers

Complementing our line of robust plain and coated paper portfolios, Xerox speciality media products enable printers to position themselves as innovators, offering unique solutions to their customers' needs, while achieving greater profits. For more information on these and other Xerox Speciality Media, visit us at www.xerox.com.



AccordianPix®



Everflat® Books



FunFlip®



PhotoPix



1

Professional Finisher

As the name indicates, when you add the Professional Finisher to your Phaser 7800, you'll benefit from a wealth of professional-level document finishing capabilities.

- Stacking: 1,500 sheets plus a 500-sheet top tray
- Stapling: 50-sheet, multi-position
- 2/4-hole punch
- Saddle-stitch booklet making, up to 15 sheets
- V-folding, up to 15 sheets
- Sizes: 182 x 182 mm to 330.2 x 457.2 mm



2



3

2

Office Finisher LX

If your immediate needs don't require some of the more advanced capabilities offered by the Professional Finisher, consider adding the Office Finisher LX, which lets you add hole punching and/or creasing capabilities as your workload evolves.

- Stacking: 2,000 sheets unstapled, 1,000 sheets single-stapled or 750 sheets dual stapled
- Stapling: 50-sheet, multi-position
- Sizes: 210 x 182 mm to 297 x 432 mm

3

Booklet Maker for Office Finisher LX

Add booklet-making capabilities to the Office Finisher LX and create booklets with up to 15 sheets, either creased or saddle-stitched.

- Sizes: 210 x 279.4 mm to 297 x 432 mm

Phaser® 7800 Quick Facts



Print

330 x 457 mm

45 ppm

WxDxH (DN configuration):
641 x 699 x 578 mm



Phaser 7800 with Professional Finisher

Phaser® 7800

Colour Printer



		Phaser 7800DN	Phaser 7800GX	Phaser 7800DX
Speed		Up to 45 ppm colour / 45 ppm black and white		
Duty Cycle		Up to 225,000 pages / month ¹		
Paper Handling		Tray 1: 100 sheets; Custom sizes: 88 x 99 mm to 320 x 1,219 mm Tray 2: 520 sheets; Custom sizes: 140 x 182 mm to 297 x 432 mm		
Paper input	Standard	NA	3 Tray Module: 1,560 sheets; Custom sizes: 140 x 182 mm to 330 x 457 mm	High Capacity Tandem Tray: 2,520 sheets; Custom sizes: 140 x 182 mm to 330 x 457 mm
	Optional	3 Tray Module	NA	NA
		High Capacity Tandem Tray	NA	NA
	Total standard capacity	620 sheets	2,180 sheets	3,140 sheets
		Optional Extra Heavy Duty Media Kit: Allows automatic two-sided printing from Tray 1 on media up to 300 gsm		
Finishing options	Standard	Dual Offset Catch Tray: 250-sheets each		
	Optional	Office Finisher LX: 2,000-sheet stacker, 50 sheets stapled, 2-position stapling, optional hole-punch		
		Booklet Maker for Office Finisher LX: Adds booklet making (crease, saddle-stitch) with up to 15 sheets		
		Professional Finisher: Stacking: 1,500-sheet stacker and 500-sheet top tray, 50-sheet multiposition stapling and hole punch, saddle-stitch booklet maker, V-Fold		
Automatic two-sided printing		Standard		
Print		As fast as 9 seconds colour and black and white		
First-page-out-time		As fast as 9 seconds colour and black and white		
Resolution (max)		Enhanced: 1200 x 2400 x 1 dpi / Photo Mode: 600 x 600 x 8 dpi / Standard: 1200 x 600 x 1 dpi		
Processor		1.33 GHz		
Memory/Hard drive		2 GB / 160 GB minimum		
Connectivity		Ethernet 10/100/1000Base-T, USB 2.0, Optional external wireless 802.11 b, g, n		
Page description languages		Adobe® PostScript® 3™, PCL® 6/5c, Adobe PDF-Direct version 1.6		
Print features		Print Around, Colour By Words, PDF Direct, Smart Duplex, Run Black, Secure and Personal Print, Booklet Printing, Smart Trays, Sample Set, Personal Saved Print, Custom size pages, Collation, Banner-size printing, Watermarks ² , PhaserSMART®, Print submission tools, Extended Font Storage, Scaling, Separation Pages, N-up, Internet Printing Protocol (IPP), Job Pipelining, Bidirectional driver, Layout/watermark, Form/Font Storage		
Accounting		Job Accounting, Usage Analysis Tool, Automatic Meter Read, Automatic Supplies Replenishment		
Security		Secure HTTPS (SSL), IPsec, 802.1X authentication, IPv6, SNMPv3, Image overwrite, Configurable disk overwrite, Port control, IP filtering		
Software Solutions		PhaserCal®		
	Standard	Optional	PhaserMatch 5.0 with PhaserMeter™ Colour Measurement Device powered by X-Rite	Optional
Warranty		One-year on-site warranty ³		

¹ Maximum volume capacity expected in any one month. Not expected to be sustained on a regular basis.

² Windows driver only

³ Products purchased under a 'PagePack' agreement do not carry a warranty. Please refer to your service agreement for full details of your enhanced service package.

Phaser® 7800

Colour Printer

Device Management

CentreWare® Internet Services, CentreWare Web, Email alerts, Cloning, PhaserSMART®, Job Accounting, Usage Analysis, Print Submission Tools, Job Tracker, WebJet Admin Interface, Tivoli, Apple® Bonjour

Print Drivers

Windows® XP, Server 2003, Server 2008, Vista, 7; Mac OS® 10.5 and higher, Oracle® Solaris 9, 10, Fedora Core 12-15, SUSE 11.x, IBM® AIX 5, HP-UX® 11.0/11iv2, Xerox Global Print Driver®, Xerox Mobile Express Driver®

Font Capability

139 PostScript® fonts; 93 PCL® fonts

Colour Standards

PANTONE® calibrated solid-colour simulations, Adobe® PostScript® device-independent colour, CIE International colour standards, and support for ICC, ICM and Apple ColorSync colour management systems, PhaserMatch® 5.0, PhaserCal®

Media Handling

Tray 1: 75–350 gsm; Automatic 2-sided printing: 75–256 gsm
Automatic 2-sided printing with Extra Heavy Duty Media Kit (optional): 75–300 gsm
Trays 2-5 and finishers: 75–256 gsm
Lightweight to extra heavyweight card stock (coated and uncoated), plain, preprinted, prepunched, letterhead, envelopes, transparencies, recycled, custom

Operating Environment

Temperature: Storage: Operating: 10° to 32° C
Relative Humidity (noncondensing): Operating: 15% to 85%
Sound pressure levels: Printing: 52 dB(A), Standby: 21 dB(A)
Sound power levels: Printing: 6.81 B(A), Standby: 3.80 B(A)

Electrical

230V: 50/60Hz: Printing (avg): 760 W
Ready: 86 W
Power Saver: 56 W
Sleep: 6.3 W

Unpackaged Dimensions (WxDxH)

7800DN: 641 x 699 x 578 mm, Weight: 81 kg
7800GX: 641 x 699 x 953 mm, Weight: 116 kg
7800DX: 641 x 699 x 953 mm, Weight: 125 kg
Office Finisher LX: 1,012 x 552 x 942 mm, Weight: 28 kg
Office Finisher LX with Booklet Maker: 1,012 x 597 x 1057 mm, Weight: 37.2 kg
Professional Finisher: 885 x 650 x 1,010 mm, Weight: 90.7 kg

Certifications

Certified to UL 60950-1/CSA 60950-1-07, 2nd Edition
FCC Part 15, Class A
Low Voltage Directive 2006/95/EC; EN 60950-1, 2nd Edition
EMC Directive 2004/108/EC
EN 55022, Class A
EN 55024
RoHS Directive 2002/95/EC
Section 508 Compliant
ENERGY STAR® Qualified

Supplies

Standard-capacity Toner Cartridges:
Cyan: 6,000 pages¹ 106R01563
Magenta: 6,000 pages¹ 106R01564
Yellow: 6,000 pages¹ 106R01565
High-capacity Toner Cartridges:
Black: 24,000 pages¹ 106R01569
Cyan: 17,200 pages¹ 106R01566
Magenta: 17,200 pages¹ 106R01567
Yellow: 17,200 pages¹ 106R01568
Staple Refills (All Finishers) 008R12941
Staple Refill Cartridge (Booklet Maker) 008R12897
Staple Cartridge (Professional Finisher) 008R12925
Staple Cartridge (Office Finisher & Convenience Stapler) 008R12964

Routine Maintenance Items

Print Cartridge: Up to 145,000 pages² 106R01582
Waste Cartridge: Up to 20,000 pages² 108R00982
Suction Filter: Up to 120,000 pages² 108R01037
IBT Cleaner: Up to 160,000 pages² 108R01036

Options

Office Finisher LX 097S04166
Booklet Maker for Office Finisher LX 497K03850
2/4-hole Punch for Office Finisher LX 497K03870
Professional Finisher 097S04168
Cabinet Stand 097S04245
3 Tray Module 097S04159
High Capacity Tandem Tray 097S04160
Convenience Stapler 498K08260
Extra Heavy Duty Media Kit 097S04341
PhaserMatch 5.0 (includes PhaserMeter™ powered by X-Rite) 097S04276
Wireless Network Adaptor
– European power converter³ 097S03741
– UK power converter 097S03742

¹ Average standard pages. Declared Yield in accordance with ISO/IEC 19798. Yield will vary based on image, area coverage and print mode.

² Average standard pages. Yield will vary depending on job run length, media size and orientation.

³ Local adaptor required for Denmark and Switzerland.

Phaser® 7800

Colour Printer



For more information visit us at www.xerox.com/office

©2011 Xerox Corporation. All rights reserved. Contents of this publication may not be reproduced in any form without permission of Xerox Corporation. XEROX®, XEROX and Design®, CentreWare®, Phaser®, PhaserMatch® and PhaserMeter™ are trademarks of Xerox Corporation in the United States and/or other countries. Adobe® and PostScript® 3™ are registered trademarks or trademarks of Adobe Systems, Incorporated. EFI® and Colorproof™ are trademarks of Electronics for Imaging, Inc. PCL® is a registered trademark of Hewlett-Packard. X-Rite® is a registered trademark of X-Rite Incorporated. As an ENERGY STAR® partner, Xerox Corporation has determined that this product meets the ENERGY STAR guidelines for energy efficiency. ENERGY STAR and the ENERGY STAR mark are registered U.S. marks. All other trademarks are the property of their respective manufacturers. The information in this brochure is subject to change without notice. 12/11 78XBR-01EB

