

DK LABEL Die-Cut Paper Labels

DK-11202 | 300 labels/roll
62mm x 100mm

DK-11208 | 400 labels/roll
38mm x 90mm

DK-11201 | 400 labels/roll
29mm x 90mm

DK-11209 | 800 labels/roll
29mm x 62mm

DK-11203 | 300 labels/roll
17mm x 87mm

DK-11204 | 400 labels/roll
17mm x 54mm

DK-11218 | 1,000 labels/roll
24mm x 24mm

DK-11219 | 1,200 labels/roll
12mm x 12mm

DK-11207 | 100 labels/roll
58mm x 58mm, Film

DK TAPE NO SMOKING

Continuous Length Paper Tape

White Tape DK22214 12mm x 30.48m
 White Tape DK22210 29mm x 30.48m
 White Tape DK22205 62mm x 30.48m
 White Tape DK-44205 Removable Adhesive (62mm x 30.48m)
 Yellow Tape DK-44605 Removable Adhesive (62mm x 30.48m)

Continuous Length Film

White tape DK-22212 62mm x 15.24m
 Yellow tape DK-22606 62mm x 15.24m
 Clear tape DK-22113 62mm x 15.24m
 White tape DK-22211 29mm x 15.24m

- CONTENTS**
- 1 x Starter Roll Die-Cut Round Paper Labels, 24mm x 24mm (250 labels)
 - 1 x Starter Roll - Continuous Length White Paper (62mm x 8m)
 - Setup & Operation Guide
 - Paper Guide Tray
 - Cleaning Sheet (for print roller)
 - CD ROM (Software/Driver/User Guide)
 - AC Power Cord
 - USB Cable



- Wide range of labels to choose from.
- Easy to load label rolls.

OPTIONAL LABEL AND TAPE SUPPLIES

- DK LABEL DIE-CUT PAPER LABELS**
- Standard Address Labels DK-11201 400/roll 29mm x 90mm
 - Shipping / Name Badge Labels DK-11202 300/roll 62mm x 100mm
 - CD/DVD Labels (Film) DK-11207 100/roll 58mm x 58mm
 - Large Address Labels DK-11208 400/roll 38mm x 90mm
 - Multi-Purpose/Return Labels DK-11204 400/roll 17mm x 54mm
 - Round Labels (24mm diameter) DK-11218 1000/roll
 - Small Address Labels DK-11209 800/roll 29mm x 62mm
 - File Folder Labels DK-11203 300/roll 17mm x 87mm
 - Round Labels (12mm diameter) DK-11219 1200/roll

- DK TAPE CONTINUOUS LENGTH TAPES**
- Durable Film Tapes**
- Medium Width Tape DK-22211 Black Print on White 29mm x 15.24M
 - Wide Tape DK-22212 Black Print on White 62mm x 15.24M
 - Wide Tape DK-22606 Black Print on Yellow 62mm x 15.24M
 - Wide Tape DK-22113 Black Print on Clear 62mm x 15.24M
- Durable White Paper Tapes**
- Narrow Width Tape DK-22214 12mm x 30.48M
 - Medium Width Tape DK-22210 29mm x 30.48M
 - Wide Tape DK-22205 62mm x 30.48M
- Removable Adhesive Paper Tapes**
- Wide Tape DK-44205 Black Print on White 62mm x 30.48M
 - Wide Tape DK-44605 Black Print on Yellow 62mm x 30.48M

Contact:

brother At your side.

Brother International (Aust) Pty Ltd

Web-site: www.brother.com.au Technical Help Web-site: <http://solutions.brother.com>

NSW/ACT 7 Khartoum Rd. North Ryde NSW 2113 Phone: (02) 9887 4344 Fax: (02) 9870 7234
VIC 1/733 Whitehorse Rd. Mont Albert VIC 3127 Phone: (03) 9899 4844 Fax: (03) 9899 4833
QLD/NT 245 Riverside Drive. West End QLD 4101 Phone: (07) 3255 1211 Fax: (07) 3255 1911
SA/TAS Unit 4, 13 King William Rd. Unley SA 5061 Phone: (08) 8272 1300 Fax: (08) 8272 1199
WA 117 Great Eastern Highway. Belmont WA 6104 Phone: (08) 9478 1955 Fax: (08) 9277 2177

All specifications subject to change without notice

QL-650TD PC Label Printer



Brother QL-650TD

Technical Information

Hardware	
Housing Dimensions	146 x 196 x 152 WDH (mm)
Housing Weight	1.3kg (without DK roll)
Housing Colour	Black
Cutter	Automatic cutter
Power	Internal S/W Power Supply
LED lamp	1
Included accessories	CD-ROM (P-touch Editor 4.2 for Windows, 3.2 for Macintosh, Address Book, Printer Driver for QL-650TD, PDF Software, User's Guide, Setup Operation Guide, Paper Guide Tray), USB cable, AC power cord, Cleaning Sheet, DK-11218 24mm Round Paper Labels (Starter roll, 250 labels), DK-22205 62mm Continuous Length Paper Tape (Starter roll, 8m)
Software	
Software Supplied	P-touch Editor Version 4.2
Connection	USB - (cable included)
Operating System	Windows 98SE / Me / 2000 Pro / XP, Mac: OSX 10.1-10.4.1
Attached Fonts	Atlanta / Belgium / Bermuda Script / Brussels / Brussels Condensed / Connecticut / Germany / Helsinki / Helsinki narrow / Istanbul / Letter Gothic / San Diego / US Roman / Utah / PT Utah Condensed / PT Dingbats 1 / PT Dingbats 2
Available Fonts	All True Type Fonts installed in your computer
Graphic Support	Clip art, Picture making, Symbol fonts, Screen capture, Image file importing
Label Length Setting	25.4mm - 1000 mm
Drawing	Line (Arrow) / Box / Rounded BOX / Ellipse / Curve / Polygon / Frame
Framing	Simple: 12, Thin Frame : 20, Thick Frame : 10, Special : 45
Background Barcode	Pattern : 60, Texture : 20 Code 39, Code 128, Codabar, UPC A/E, EAN 8/13/128, Interleaved 2 of 5, Postnet, Laser bar code, ISBN2, ISBN5, PDF 417, Qr code, data matrix
Copy Printing	2 - 500 (Max)
Automatic Counter	Yes (for serialisation)
Template Download	Yes
Calendar Printing	When connected to PC/MAC or standalone
Time / Date Printing	Yes
Import Image Files	BMP / ICO / DIB / TIF / JPG / JPEG / WMF / EMF / PNG
Horizontal/Vertical Block Alignment	Yes
Mirror Printing	Yes
Vertical Printing	Yes
Numbering	1 - 500 / A - Z / a - z
File link (Database)	Accept Microsoft Access (97, 2000 and 2002), CSV, Excel
Label List	Yes
Auto Format	25 categories
Table Inserting	Yes
Screen Capture	Yes
Add-in function	MS Word and MS Excel (97, 2000, 2002, 2003) MS Outlook (2000, 2002, 2003)
System Requirements	
Computer	PC and Mac** compatible
Operating System	Windows®: 98SE/ME/2000 Pro/XP, Mac: OSX 10.1-10.4.1
CPU	Intel Pentium 266MHz or higher (700MHz or higher recommended)
Memory (RAM)	(Win 98SE, Me: 64MB) (2000 Pro, XP:128MB) or more required Mac: 32MB or more required
Hard Disk Free Space	Windows: 70MB or more. MAC: 20MB or more (Min 100MB for all options)
Interface	USB 1.1 or later specification, plus serial interface for ASCII data*
Other	CD-ROM drive for installation
Monitor	SVGA, high color or higher graphics card
Optional print server	Optional print server PS-9000 available for network environments*

*Additional purchase required for serial cable and PS-9000 for networking
**MAC compatible to print from included P-touch editor software only



QL-650TD



- In-built time and date printing at the touch of a button
- Front panel LCD display shows time, date and message
- Automatic cutter
- RS232/Serial & USB Port
- Use with or without a PC
- Windows® and MAC® compatible
- Fast, versatile printing of high-quality labels at 300dpi
- Perfect for shipping labels, inventory labels, banners & signage
- 90mm per second print speed (56 labels / Min*)
- Thermal Print Technology eliminates toner, ink and ribbon costs
- ESC/P Programming commands for non Windows® control
- Easy to use label design software
- Specially designed label templates for use with or without a PC

QL-650TD

Print stored time and date labels direct from your Brother QL-650TD even when its not connected to your computer

Introducing the new QL-650TD, the latest addition to the QL Printer range. This is the fastest, easiest and most versatile way to print labels in seconds. Whether you need one label or lots of labels this machine is perfect for printing address & shipping labels, inventory labels, name badges, banners and signage. With a print speed of 90mm per second and in-built time and

date printing you can print labels with or without a PC, making it perfect for a wide range of environments including:

- Inventory management
- Pharmaceutical/medical
- Compliance labelling
- Asset management
- Warehouse management
- Shipping



*Standard address label, 4 line, text only

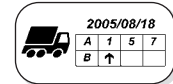
Fast Die-Cut Labels

Our die-cut label range will give you complete label flexibility, enabling you to print just one label, with no wastage, or larger quantities quickly and efficiently. You can even print labels directly from MS Word®, Outlook® and Excel® in three easy steps:



Option to print labels without the need for a PC

With 8 in-built label designs, and the ability to store up to 36 of your own designs, you can print labels at the touch of a button without the need for a PC. This will enable you to print labels whenever and wherever you need them. Insert logo's, symbols and other graphics, or use the real-time clock to add today's or a future calculated date/time of your choosing.



Barcodes (including in-built)

With a print speed of up to 90mm per second and a print resolution of 300dpi, the QL-650TD is perfect for creating barcode labels quickly and easily. Choose from up to 15 popular barcode formats, including CODE39, CODABAR(NW-7), QR Code, and PDF417.



In-built fonts with ESC/P emulation

System integrators and programmers can now create totally customised label printing solutions. Send ASCII text and ESC/P commands to the serial port, as an alternative to using the supplied Windows®/Mac® printer drivers or editor software.

Banners

Brother's continuous length durable film tape is perfect for creating signage and banners, up to 1m long.



Label design software

The QL-650TD is supplied with two software programs;

Address Book

Simply select one of the contacts saved in your address book, click on one of the many label designs supplied, and preview your finished label before printing.

P-touch Editor

This software option gives total flexibility. Choose from a wide range of fonts, text, bar-codes, images, frames, clipart and symbols. Be totally creative and add a personal touch to your labels.

