

## imageCLASS

MF 249dw / MF 247dw  
MF 244dw

Multifunction, Wireless, Duplex, Laser Printers

## REVOLUTIONIZE TODAY'S WORKSPACE

- All-in-one functionality allows you to **print, scan, copy,** and **fax** (MF249dw/MF247dw only) with ease.
- **Easily connect** your compatible mobile devices without a router using Wi-Fi® Direct Connection.\*
- Print at speeds of up to **28 pages per minute,\*\*** with your first print in your hands in **6 seconds** or less.\*\*\*
- Print on-the-go with **Canon PRINT Business,†** **Apple® AirPrint®,\*\*** **Mopria™ Print Service,†††** and **Google Cloud Print™.▲**
- Navigate through all the features with the user-friendly, **tiltable, black-and-white touch LCD panel.** (MF249dw/MF247dw only)
- Supports host-based UFR II LT, PCL (5e, 6) languages to provide **printing versatility.**
- Eco-conscious, all mode, **two-sided printing** out of the box helps save paper and related cost.
- Paper capacity allows for **250 sheets** in the standard cassette and one sheet in the multipurpose tray.▲▲
- Low energy consumption; uses approximately **2 W** in wireless, **Energy Saver Mode.**



MF247dw



Mobile Device  
Printing



Auto Duplex Print



SEND



SERVICE &  
SUPPORT

World Class. Here at Home.

# ADVANCED TECHNOLOGIES FOR YOUR OFFICE

## Print On-The-Go

Print a variety of file types, Web pages, and images on-the-go with **Canon PRINT Business**,<sup>†</sup> **Apple AirPrint**,<sup>\*\*</sup> **Mopria Print Service**,<sup>\*\*\*</sup> and **Google Cloud Print**<sup>▲</sup> using your compatible mobile device. You can also scan hard-copy originals using Canon PRINT Business. For more information on Canon supported apps and compatibility, please visit <https://www.usa.canon.com/mobile-app>.



## Service and Support

At its foundation, Canon has an uncompromising dedication to product reliability, service, and support. From cutting-edge technology to industry-leading response times, Canon takes pride in delivering complete customer satisfaction. Canon's award-winning, 100% U.S.-based, friendly, and knowledgeable Customer Service Team provides expert assistance for every level of experience.

## GENUINE Toner

Canon's GENUINE toner is designed to help improve image processing and precise character printing as well as overall image quality. The Single-Cartridge System combines the toner and drum into the same unit, which means you only have one consumable to replace. Designed by Canon engineers and manufactured in Canon facilities, GENUINE supplies are developed using precise specifications, so you can be confident that your Canon device will produce high-quality results consistently. The MF240 Series offers standard Cartridge 137 Black (2,400-page yield).

## Environmentally Conscious

Help decrease power consumption and energy costs with Canon's efficient Energy Saver mode. In this mode, the MF240 Series uses approximately 2 W of energy and meets ENERGY STAR<sup>®</sup> guidelines.

## Generation Green

The MF240 Series is part of Canon's Generation Green Program, which highlights the company's commitment to sustainability. Learn more at [www.usa.canon.com/green](http://www.usa.canon.com/green).

## Touch LCD Panel (MF249dw/MF247dw only)

The intuitive, tiltable touch LCD panel allows you to easily navigate through the menu. The wide-screen display is user friendly, helping you to complete tasks more quickly.



MF249dw

\* Wi-Fi<sup>®</sup> is a registered trademark of the Wi-Fi Alliance<sup>®</sup>. The Wi-Fi CERTIFIED<sup>™</sup> Logo is a certification mark of the Wi-Fi Alliance<sup>®</sup>.

\*\* Print speed is based on internal testing. Print speed may vary depending on the number of copies selected as well as on the settings for size, type, and orientation of paper.

\*\*\* May vary depending on the output environment.

† Canon PRINT Business is a free app available on the App Store<sup>®</sup> and Google Play<sup>™</sup> Store. For more information, including compatibility, please visit <https://www.usa.canon.com/mobile-app>. Users of Canon Mobile Printing can simply update the app to use Canon PRINT Business; users who have installed Canon Mobile Scanning for Business should install Canon PRINT Business on their compatible device. After Canon PRINT Business is installed, users can re-register their Canon Mobile Scanning for Business device list and local documents.

\*\* Apple AirPrint functionality requires an iPad, iPad Mini, iPad 2, the new iPad, iPhone 3GS or later, or iPod touch 3rd generation or later device running iOS 7.0 - 8.0 or later, and an AirPrint-enabled printer connected to the same network as your iOS device. A printer connected to the USB port of your Mac, PC, AirPort Base Station, or Time Capsule is not supported.

\*\*\* Mopria Print Service, available free at the Google Play Store, requires a compatible Android 4.0 - 5.0 smartphone or tablet. The printer must be either wirelessly connected to the network router or with an Ethernet cable. The mobile device and printer must be connected to the same network.

▲ Google Cloud Print requires an Internet connection and Google Account. Printer firmware update may be necessary for Google Cloud Print<sup>™</sup> function. Certain exceptions may apply. A PC running Windows<sup>®</sup> XP or later or a Mac<sup>®</sup> running OS 10.4.11 or later and USB cable are required to perform firmware update.

▲▲ Based on 20 lb. Bond paper.

FEATURES	imageCLASS MF249dw	imageCLASS MF247dw	imageCLASS MF244dw
<b>BASIC SPECIFICATIONS</b>			
<b>Functions</b>	Print/Scan/Copy/Fax/PC Fax	Print/Scan/Copy/Fax/PC Fax	Print/Scan/Copy
<b>Replaces</b>	MF229dw	MF227dw	NEW
<b>Print Speeds (default print mode: 2-sided)</b>	Up to 28 ppm** (1-Sided, Plain Paper, Letter) 16 ppm** (2-Sided, Plain Paper, Letter)		
<b>Connectivity</b>	USB Device 2.0 Hi-Speed, 10/100/Base-T Ethernet (Network), Wi-Fi 802.11 b/g/n <sup>■</sup>		
<b>Operating Systems</b>	Windows® 10/8.1/8/7, Windows Vista®, Windows Server® 2012 R2/2012/2008 R2/2008/2003 R2/2003; Mac OS 10.5.8 and Up. Drivers Available For Download From <a href="http://www.usa.canon.com/support">www.usa.canon.com/support</a>		
<b>PAPER HANDLING</b>			
<b>Standard Cassette</b>	Up to 250-Sheets; <sup>▲▲▲</sup> 16 to 43 lb. Bond; Letter, Legal, Statement, Executive		
<b>Multipurpose Tray</b>	1 Sheet; <sup>▲▲▲</sup> 16 to 43 lb. Bond; Letter, Legal, Statement, Executive		
<b>Automatic Document Feeder</b>	Up to 50 Sheets Duplex ADF	Up to 35 Sheets ADF	
<b>Output Tray</b>	100 Sheets (Face-down)		
<b>Duplex</b>	Print/Scan/Copy/Fax	Print/Scan/Copy	
<b>Monthly Duty Cycle</b>	Up to 15,000 Pages		
<b>RMPV (Recommended Monthly Print Volume)</b>	750-3,000 Pages		
<b>Security</b>	IP/MAC address filtering, IEEE802.1x, SNMPv3, HTTPS/IPPS		
<b>PRINTER SPECIFICATIONS</b>			
<b>First-Print Time</b>	6 Seconds or Less (Letter) <sup>***</sup>		
<b>Printer Language</b>	UFR II LT (Host-Based), PCL		
<b>Print Resolution</b>	Up to 600 x 600 dpi		
<b>Print Features</b>	Watermark, Page Composer, Toner Saver		
<b>Print Memory</b>	512 MB (Shared)		
<b>Mobile Print</b>	Canon PRINT Business, <sup>†</sup> Apple® AirPrint® <sup>††</sup> Mopria™ Print Service, <sup>†††</sup> Google Cloud Print™ <sup>▲▲</sup>		
<b>COPIER SPECIFICATIONS</b>			
<b>First-Copy Time</b>	9 Seconds or Less (Letter) <sup>***</sup>		
<b>Copy Resolution</b>	Up to 600 x 600 dpi		
<b>Halftones</b>	256 Levels		
<b>Maximum Number of Copies</b>	Up to 999 Copies		
<b>Copy Features</b>	Zoom 25%-400%, 2-on-1, 4-on-1, ID Card Copy, Memory Sort		
<b>Copy Memory</b>	512 MB (Shared)		
<b>SCANNER SPECIFICATIONS</b>			
<b>Scan Type</b>	Color Contact Image Sensor (CIS); 24-bit Color Depth; TWAIN/WIA/ICA Compatible		
<b>Scan Speed</b>	Black/Color: Approx. 23/15 Seconds Per Sheet (DADF) <sup>●</sup>	Black/Color: Approx. 21/15 Seconds Per Sheet (ADF) <sup>●</sup>	
<b>Scan Resolution</b>	Up to 600 x 600 dpi (Optical)		
<b>Output File Formats</b>	TIFF, JPEG, PDF, Compact PDF	NA	
<b>Scan Features</b>	Push (Scan-to-PC) and Pull Scan		
<b>Scan-to-E-mail</b>	Yes	NA	
<b>Scan-to-SMB</b>	Yes	NA	
<b>FAX SPECIFICATIONS</b>			
<b>Modem Speed</b>	Up to 33.6 Kbps (Super G3) <sup>●●</sup>		NA
<b>Fax Resolution</b>	Up to 200 x 400 dpi (Super Fine)		
<b>Fax Memory</b>	Up to 256 Sheets <sup>●●●</sup>		
<b>Speed Dialing</b>	4 One-Touch Speed Dials (Favorites); Up to 100 Coded Dials		
<b>Group Dialing</b>	Up to 103 Destinations		
<b>Sequential Broadcasting</b>	Up to 114 Destinations		
<b>PC Fax</b>	Yes (TX only)		
<b>Fax Features</b>	Fax-Forwarding, Dual Access, Remote Reception, PC Fax (TX only), Distinctive Ring Pattern Detection, Error Correction Mode, Auto Redial, Fax Activity/Result Management Reports		
<b>GENERAL SPECIFICATIONS</b>			
<b>Dimensions</b>	15.4" (W) x 14.9" (D) x 14.2" (H)	15.4" (W) x 14.6" (D) x 14.2" (H)	15.4" (W) x 14.6" (D) x 14.2" (H)
<b>Weight (without/with cartridge)</b>	28.9/30.2 lb.	26.9/28.2 lb.	26.7/28 lb.
<b>Package Weight</b>	37.5 lb.		
<b>Warranty</b>	Warranty: One-Year Limited Exchange/Carry-in <sup>◆</sup> (Extended Warranty Available)		
<b>ENVIRONMENTAL SPECIFICATIONS</b>			
<b>Typical Energy Consumption (TEC)</b>	0.9 kWh		
<b>Power Consumption</b>	<b>Operation:</b> 480 W; <b>Standby:</b> 5.6 W <b>Energy Saver:</b> 1.2 W (USB), 1.3 W (Wired), 2 W (Wireless)	<b>Operation:</b> 480 W; <b>Standby:</b> 5.6 W <b>Energy Saver:</b> 1.2 W (USB), 1.3 W (Wired), 2 W (Wireless)	<b>Operation:</b> 480 W; <b>Standby:</b> 4.1 W <b>Energy Saver:</b> 1.2 W (USB), 1.3 W (Wired), 2 W (Wireless)
<b>Noise Level<sup>▲▲</sup></b>	<b>Operation:</b> 51 dB (Sound Pressure); 66 dB (Sound Power). <b>Standby:</b> Inaudible (Sound Pressure); 43 dB or Less (Sound Power)	<b>Operation:</b> 52 dB (Sound Pressure); 66 dB (Sound Power). <b>Standby:</b> Inaudible (Sound Pressure); 43 dB or Less (Sound Power)	<b>Operation:</b> 52 dB (Sound Pressure); 66 dB (Sound Power). <b>Standby:</b> Inaudible (Sound Pressure); 43 dB or Less (Sound Power)
<b>ENERGY STAR<sup>®</sup></b>	Yes		
<b>EPEAT</b>	Silver		
<b>WHAT COMES IN THE BOX</b>			
	MF240 Series Product, Starter Cartridge 137 (Starter Yield: 1,700 Pages; ISO/IEC Standard), Power Cord (USB not included), Starter Guide, User Software DVD-ROM, Warranty Card, Canon Drivers, Phone Cable (MF249dw/MF247dw only)		

\*\* Print speed is based on internal testing. Print speed may vary depending on the number of copies selected as well as on the settings for size, type, and orientation of paper.

\*\*\* May vary depending on the output environment.

■ Wireless printing requires a working network with wireless 802.11b/g or 802.11n capability. Wireless performance may vary based on terrain/distance between printer and wireless network clients.

◆ Letter-sized, after being restored from Energy Saver mode.

† Canon PRINT Business is a free app available on the App Store<sup>®</sup> and Google Play<sup>™</sup> Store. For more information, including compatibility, please visit <https://www.usa.canon.com/mobile-app>. Users of Canon Mobile Printing can simply update the app to use Canon PRINT Business; users who have installed Canon Mobile Scanning for Business should install Canon PRINT Business on their compatible device. After Canon PRINT Business is installed, users can re-register their Canon Mobile Scanning for Business device list and local documents.

†† Apple AirPrint functionality requires an iPad, iPad Mini, iPad 2, the new iPad, iPhone 3GS or later, or iPod touch 3rd generation or later device running iOS 7.0 - 8.0 or later, and an AirPrint-enabled printer connected to the same network as your iOS device. A printer connected to the USB port of your Mac, PC, AirPort Base Station, or Time Capsule is not supported.

††† Mopria Print Service, available free at the Google Play Store, requires a compatible Android 4.0 - 5.0 smartphone or tablet. The printer must be either wirelessly connected to the network router or with an Ethernet cable. The mobile device and printer must be connected to the same network.

▲ Google Cloud Print requires an Internet connection and Google Account. Printer firmware update may be necessary for Google Cloud Print<sup>™</sup> function. Certain exceptions may apply. A PC running Windows XP or later or a Mac running OS 10.4.11 or later and USB cable are required to perform firmware update.

▲▲▲ Based on 20 lb. Bond paper.

● Based on Letter-sized scanning at 300 x 300 dpi.

●● The Public Switched Telephone Network currently supports fax modem speeds of 28.8 Kbps or lower, depending on telephone line conditions. Sending and receiving fax machines need to conform to ITU-T #1 guidelines.

●●● Based on ITU-T #1 Chart (standard mode).

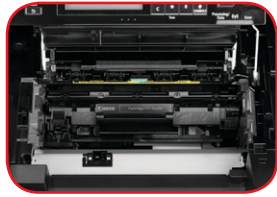
◆ Warranty program is subject to certain conditions and restrictions. See warranty card for details.

◆◆ Declared noise emission in accordance with ISO 9296.

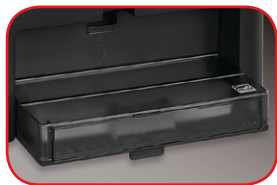
# imageCLASS

MF249dw / MF247dw  
MF244dw

50-Sheet Duplex Automatic Document Feeder



Easy, Front-Loading  
Single-Cartridge System



Standard  
250-Sheet Cassette



MF249dw

Tiltable Touch LCD Panel



One-Sheet  
Multipurpose Tray



## imageCLASS MF240 Series and Accessories

imageCLASS MF249dw	01418C006
imageCLASS MF247dw	01418C011
imageCLASS MF244dw	01418C021
Cartridge 137: Full-Yield; 2,400 Sheets ISO/IEC	9435B001

## imageCLASS MF249dw/MF247dw eCarePAKS

Tier 2E One-Year Exchange/Carry-in	5707B042
Tier 2E Two-Year Exchange/Carry-in	5707B043
Tier 2E Three-Year Exchange/Carry-in	5707B044
Tier 2E Four-Year Exchange/Carry-in	5707B045

## imageCLASS MF244dw eCarePAKS

Tier 1E One-Year Exchange/Carry-in	5707B038
Tier 1E Two-Year Exchange/Carry-in	5707B039
Tier 1E Three-Year Exchange/Carry-in	5707B040
Tier 1E Four-Year Exchange/Carry-in	5707B041

[USA.CANON.COM/IMAGECLASS](http://USA.CANON.COM/IMAGECLASS)



As an ENERGY STAR partner, Canon U.S.A., Inc. has certified these models as meeting the ENERGY STAR energy efficiency criteria through an EPA recognized certification body. ENERGY STAR and the ENERGY STAR mark are registered U.S. marks. Android is a trademark of Google Inc. App Store is a service mark of Apple Inc. iPhone, iPad Air, iPad, iPad mini, AirPrint and AirPrint logo, are trademarks of Apple Inc., registered in the U.S. and other countries. iOS is a trademark or registered trademark of Cisco in the United States and other countries and is used under license. Canon, imageCLASS, GENUINE, and the Super G3 logo are registered trademarks of Canon Inc. in the United States and may also be registered trademarks or trademarks in other countries. All other referenced product names and marks are trademarks of their respective owners. Specifications and availability subject to change without notice. Not responsible for typographical errors.  
©2016 Canon U.S.A., Inc. All rights reserved.

0202W312  
0916-MF240SERIES-5M-PSP

