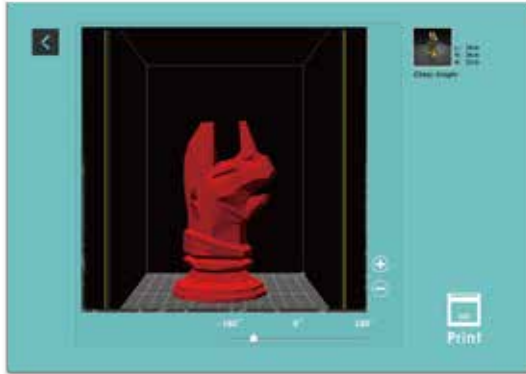




### XYZWare's Creative EZ mode

Designed for beginners. EZ mode makes 3D printing quick and easy!

- A. Select an object you like
- B. Preview and scale
- C. Print



### ABS Filament 600g



### Dimensions

Dimension w/ Cartridge (WxHxD)  
18.4 x 20 x 22 inch (46.8 x 51 x 55.8 cm)

### Package

Package Dimension  
22.1 x 23.3 x 27.6 inch (56 x 59 x 70 cm)  
Package Gross Weight  
62.8 lb (27.5kg)

### Printing Spec

Technology  
FFF (Fused Filament Fabrication)  
Maximum Build Volume (WxHxD)  
5.9W x 7.8H x 7.8D inch (15x20x20cm)  
Printing Mode  
Fine 0.1 mm (100 microns)  
Standard 0.2 mm (200 microns)  
Speed 0.3 mm (300 microns)  
Ultra Fast 0.4 mm (400 microns)  
Print Head  
Single Nozzle  
Nozzle Diameter  
0.4 mm  
Filament Diameter  
1.75 mm

### Display

Panel Type  
2.6" FSTN LCM  
Language  
English, Japanese  
Connectivity  
USB 2.0

### Software(XYZWare)

File Types  
.stl , XYZ Format  
OS Support  
Windows XP ( .Net 4.0 required) and Windows 7 above (for PC)  
Mac OSX 10.8 64-bit above (for Mac)

### Hardware

Hardware Requirements (for PC/Mac)  
X86 32/64-bit compatible PCs with 2GB+ DRAM (for PC)  
X86 64-bit compatible Macs with 2GB+ DRAM (for Mac)

※ Product features, price, and specification are subject to change without notice.

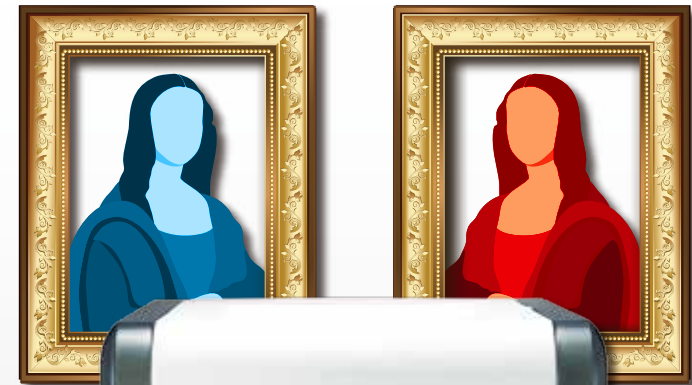


Email: info@xyzprinting.com

# da Vinci 2.0 Duo

**Double the Productivity  
Double the Fun!**

Dual Extruder 3D Printer Has Never Been This Approachable





## Dual Extruders

da Vinci 2.0 Duo features two extruders allowing you to create multi-color projects using the 12 filament colors available in easy-to-install cartridges.



## Cloud Library

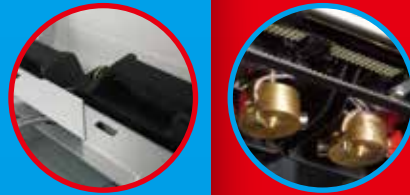
Hundreds of 3D models available. Share, create, and print online with the XYZWorld community. Unleash the endless possibility of 3D printing



## Safe

- Closed printing area protects users from the high temperatures required to print
- No external filament movement during operation
- CE certified

# da Vinci 2.0 Duo



## Low Maintenance

- Print-bed detection and assisted leveling
- Automatic nozzle cleaning
- Plug-and-Play printer. No assembly required



## Great Value

Dual extruder printers have never been this approachable ever!



## Easy Loading

- Cassette-like filament cartridge makes filament changing an easy task
- Low filament alert

